



Community

Progress Report

.....

Understanding our
obstacles and
opportunities in
Washoe County

NOVEMBER 2021



Washoe County
Commissioners –
Working to improve our
collective quality of life



DATA SHOULDN'T EXIST IN **A VACUUM**

Using information to drive effective
decision making is what positively
transforms communities.

What is TMT?



WHO WE ARE



NATIONALLY RECOGNIZED LEADER

Community Indicator
non-profit committed to
measuring critical quality
of life data since 1989.



TRUSTED COMMUNITY DATA SOURCE

We are non-partisan,
independent, non-biased
and trusted.



COMMUNITY CONVENER

Catalyst for community
conversation about
critical quality of life
issues

OUR MISSION

To enhance our collective quality of life by providing accurate, timely and objective data as the basis for community engagement, dialogue and action.





WHAT WE DO

MEASURING OUR PROGRESS
ENGAGING THE COMMUNITY

1 NEVADA TOMORROW DATA PORTAL

Our new Community Data
Tool found at
www.nevadatomorrow.org

3 ADVOCATE FOR CHANGE

Advocate for community
action to positively impact
quality of life

5 RESOURCE FOR RESILIENCE

Provide data support and resources for community agencies and
organizations so that they can build meaningful capacity and affect
true community impact

2 COMMUNITY SPEAKER SERIES

A series of monthly community
conversation about topics that
matter to your quality of life

4 PROFOUND COMMUNITY IMPACT

Lead nationally recognized mega-
grants such as the Robert Wood
Johnson Foundation and
deBeaumont Foundation's BUILD
Health Challenge

Children Living Below Poverty Level

Select a Zip Code ▼

Measurement Period: 2014-2018 ▼

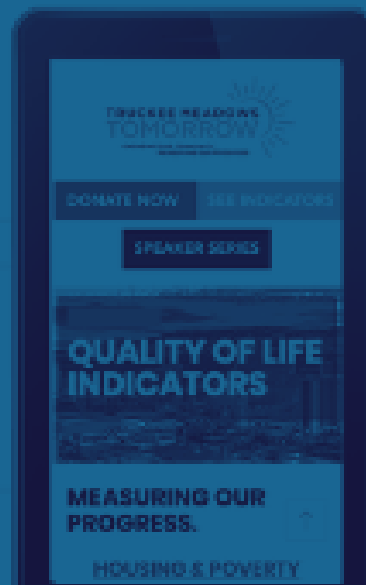
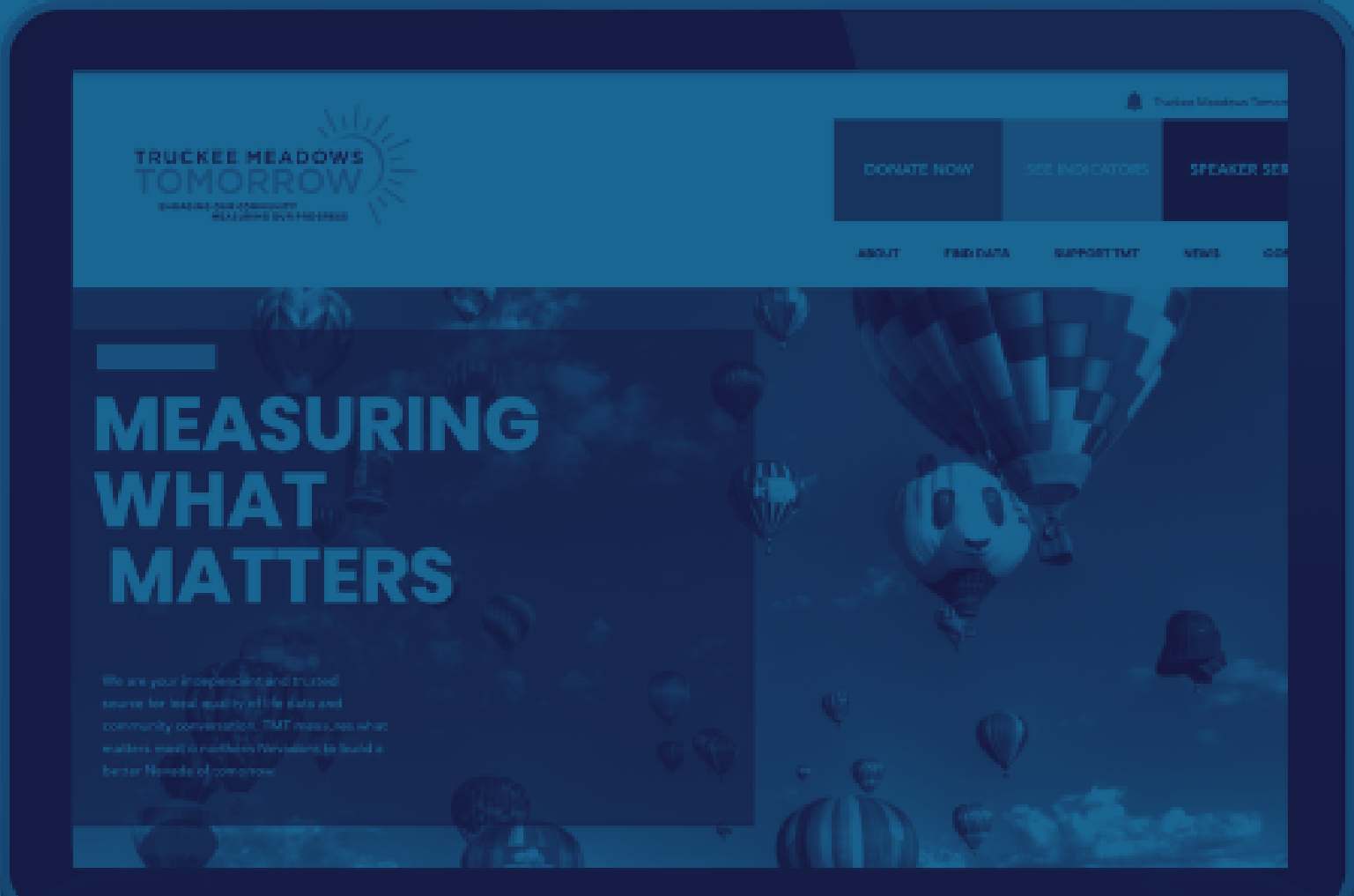
Filter: none (



This indicator shows the percentage of people under the age of 18 who are living below the federal poverty level.

ant?
me has been shown to affect a child's well-being in numerous studies. Compared to the
and emotional problems. Children in poverty also tend to exhibit cognitive difficulties,

h weight or lead poisoning, and are also more li

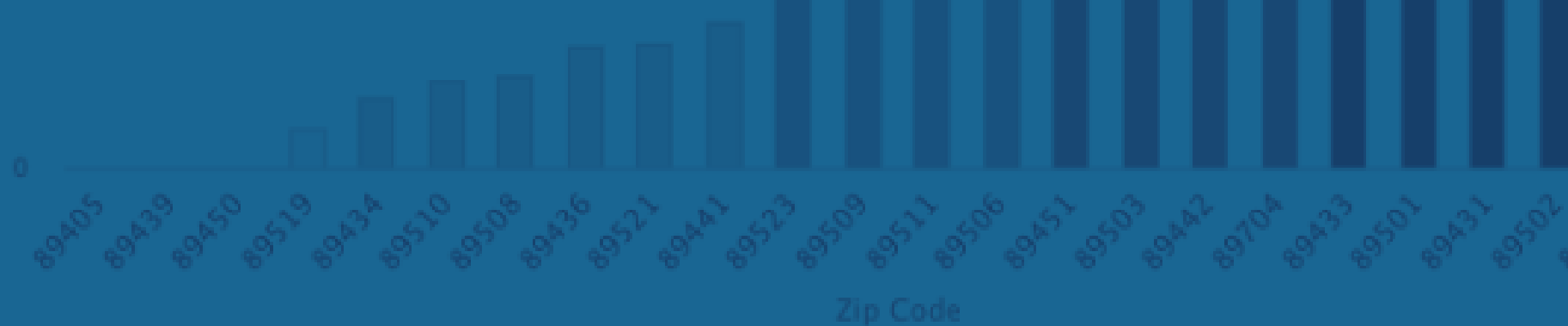


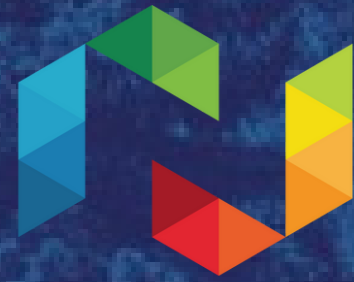
What is

NevadaTomorrow.org?

Plumas National Forest
Tahoe National Forest
Carson City
Map contributors, CC-BY-SA

Clark County
Mountains
Wilderness
Study Area

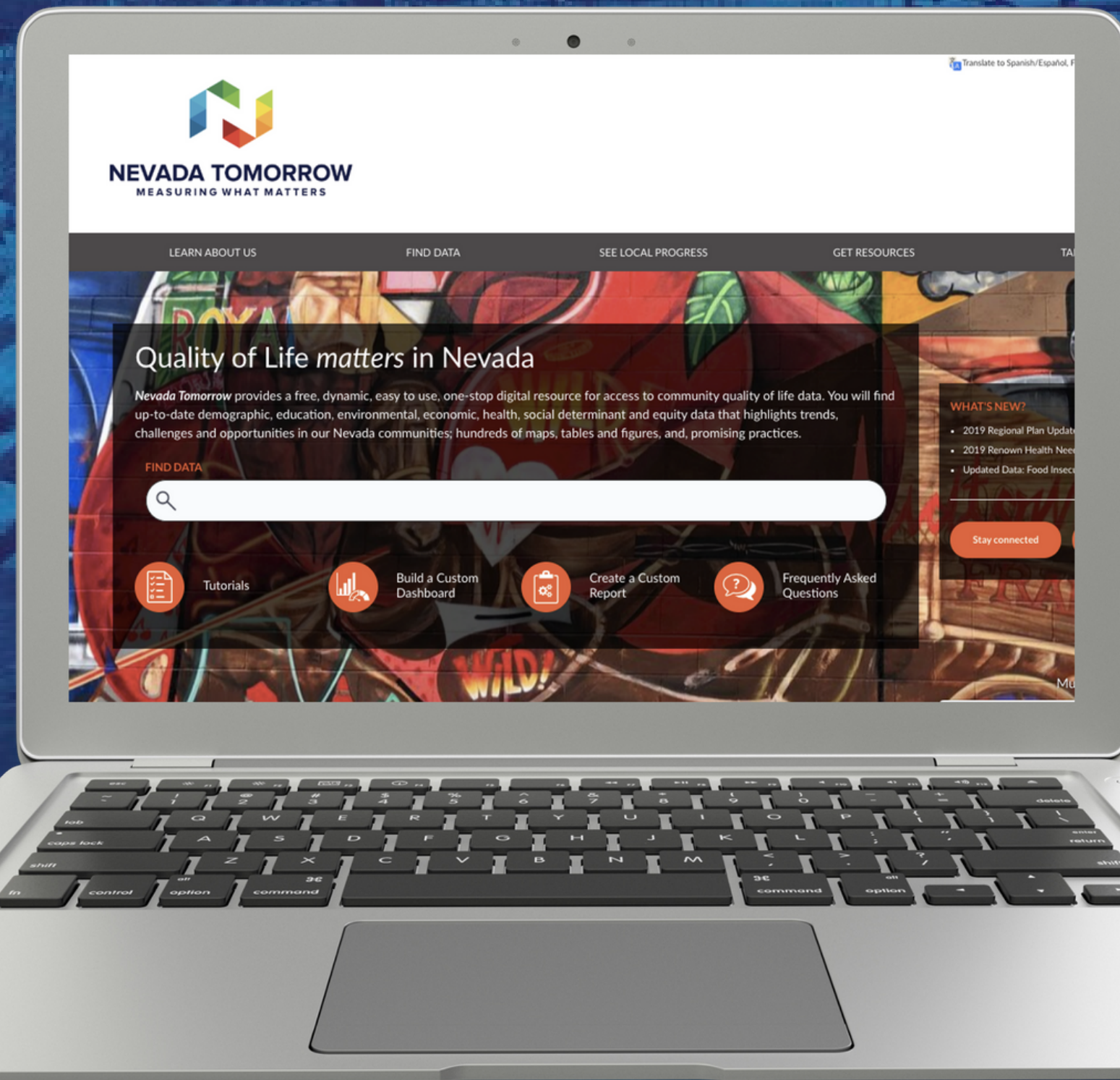




NEVADA TOMORROW

MEASURING WHAT MATTERS

FREE, DYNAMIC, EASY TO USE, ONE-STOP DIGITAL RESOURCE FOR ACCESS TO COMMUNITY QUALITY OF LIFE DATA



FIND UP-TO-DATE DEMOGRAPHIC, EDUCATION, ENVIRONMENTAL, ECONOMIC, HEALTH, SOCIAL DETERMINANT AND EQUITY DATA

HIGHLIGHTED TRENDS, CHALLENGES AND OPPORTUNITIES IN OUR NEVADA COMMUNITIES

HUNDREDS OF MAPS, TABLES AND FIGURES, FUNDING OPPORTUNITIES AND PROMISING PRACTICES



Nevada Tomorrow.org helps YOU

DATA HELPS COMMUNITY LEADERS LIKE YOU TO:

- ACHIEVE TARGETED COMMUNITY IMPACT
- IMPROVE EFFICIENT USE OF RESOURCES
- MAKE DATA-INFORMED POLICY DECISIONS
- REDUCE STAFF BURDEN OF DATA MINING & RESEARCH
- HELP BALANCE ACTUAL NEED WITH PHILANTHROPIC GOALS
- DISCOVER EMERGING TRENDS
- GUIDE STAFF PERCEPTIONS OF NEED
- PROVIDE EVIDENCE/BACK-UP FOR DECISION MAKING



Truckee Meadows

Community Progress Report

WHY A COMMUNITY DATA REPORT?

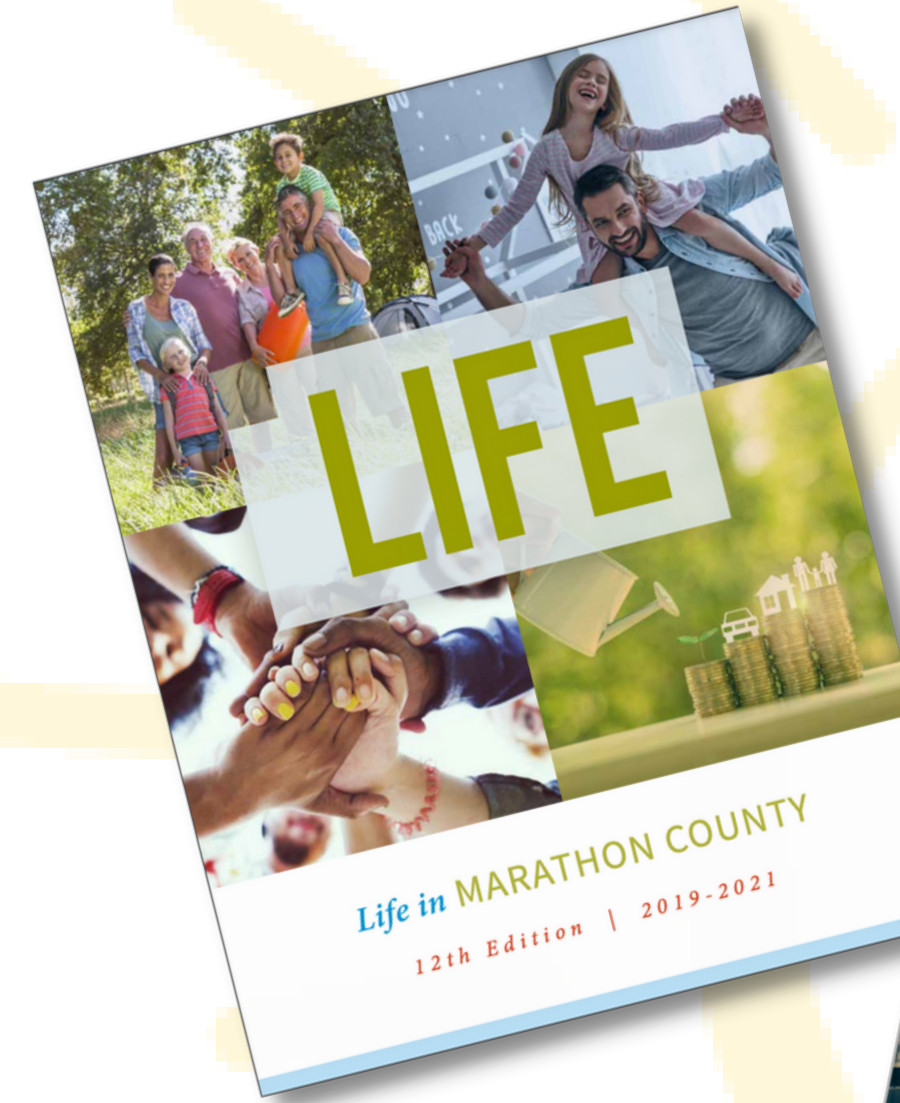
This report provides statistics on safety, economics, health, education, environment, population, as well as a more in-depth look at local mental health and housing.



How do you know where
to go if you don't know
where you are?

OUR GOAL

- BRING WASHOE COUNTY TO THE FOREFRONT OF CUTTING EDGE COMMUNITY DATA
- JOIN A GROWING LIST OF COMMUNITIES WHO MONITOR QUALITY OF LIFE PROGRESS WITH MEASURABLE, TRACKABLE & RELIABLE DATA
- BE A RESOURCE FOR POLICY AND ADVOCACY LIKE WE USED TO BE!



[Marathon County - WI
LIFE Report](#)

[Lubbock County - TX
Community Status
Report](#)



OUR PARTNERSHIP



ERICA MIRICH

Executive Director

Truckee Meadows Tomorrow



MICHAEL BRAZIER

CEO & President

United Way of Northern Nevada and the Sierra



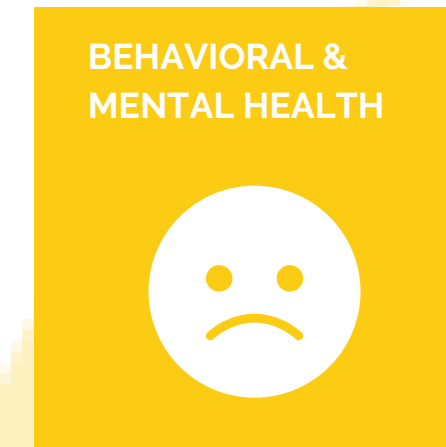
United Way of Northern Nevada and the Sierra





WHAT WE WILL ACHIEVE

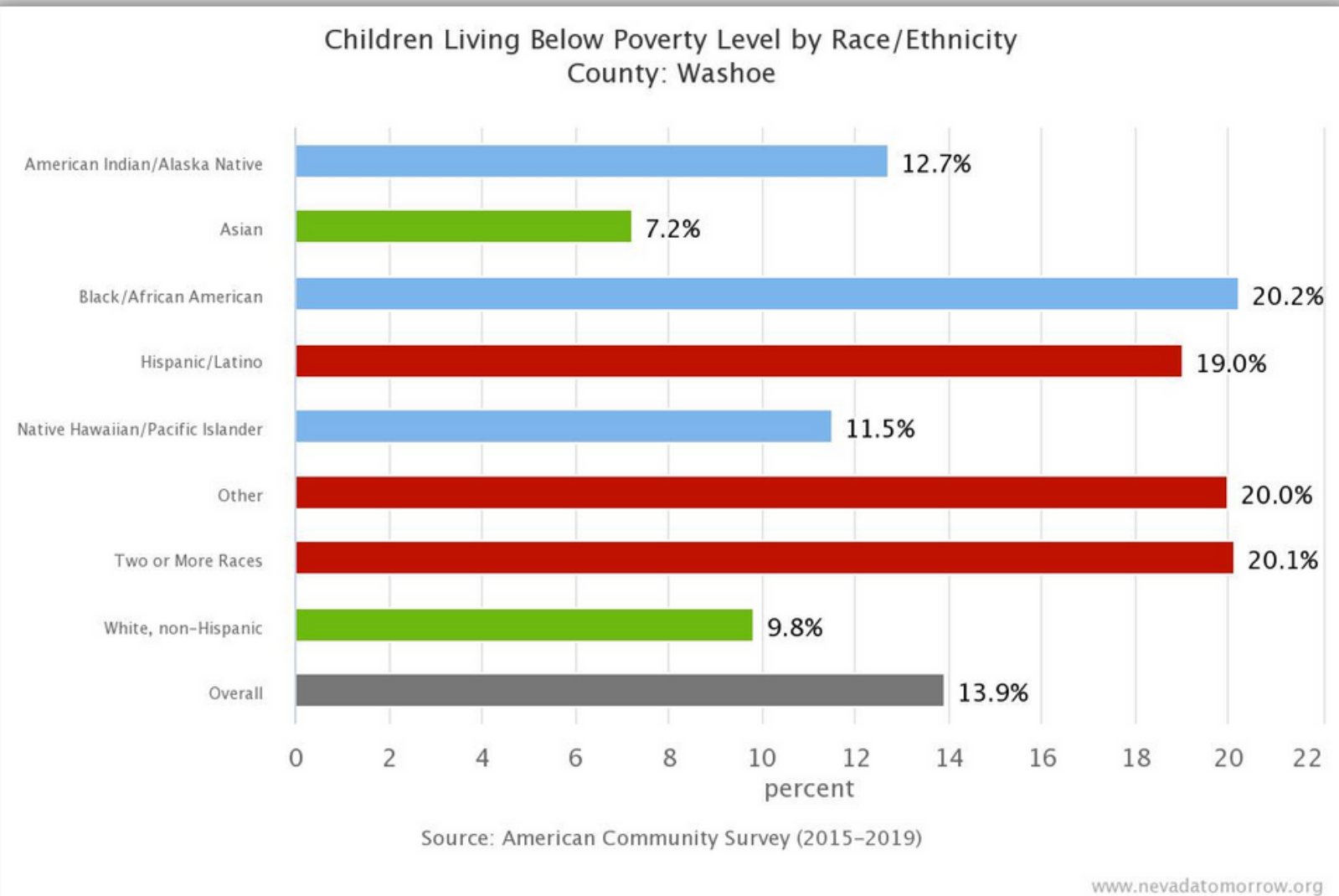
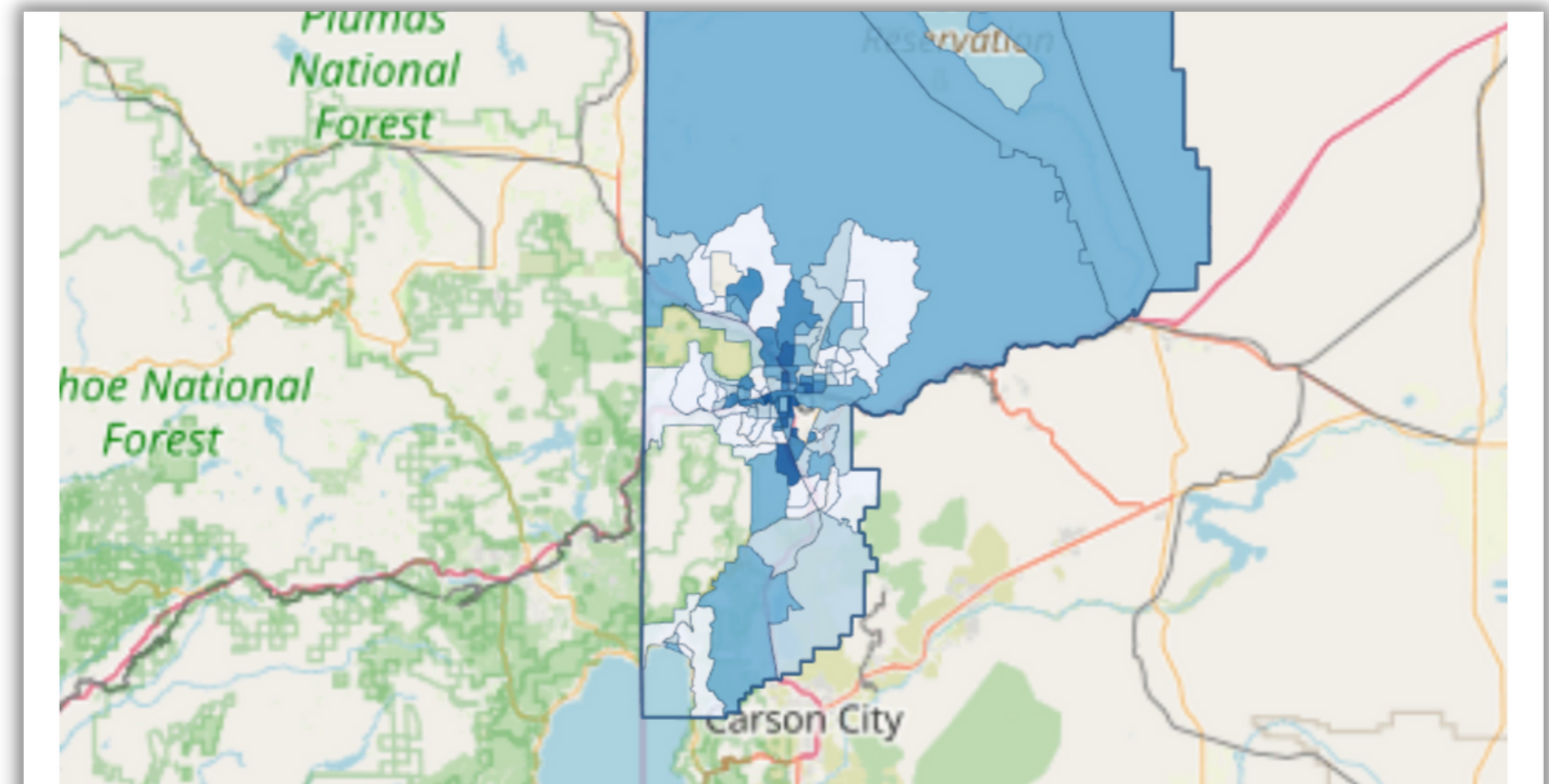
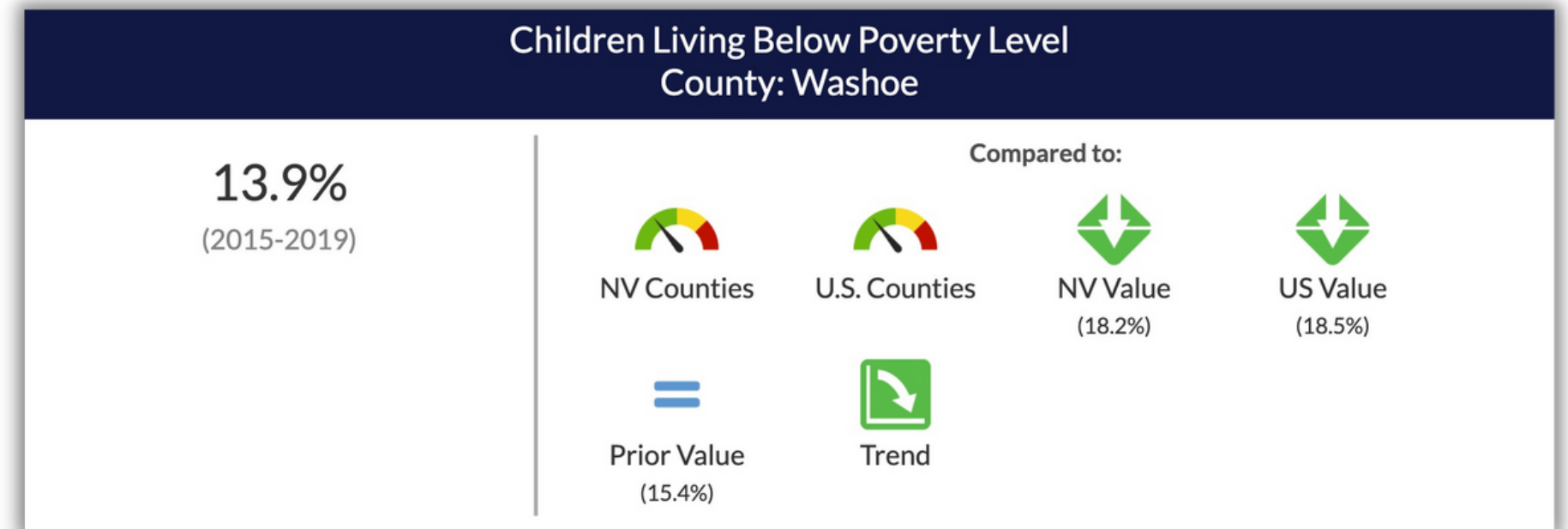
- **BUILD AWARENESS AND UNDERSTANDING OF ISSUES FACING OUR COMMUNITY**
- **HIGHLIGHT THE POSITIVE PROGRESS MADE IN IDENTIFIED COMMUNITY QUALITY OF LIFE DATA INDICATORS**
- **PROVIDE A RESOURCE FOR OUR COMMUNITY THAT WILL DRIVE COLLABORATION**
- **ENABLE ADVOCACY FOR PROGRESS WITH DECISION MAKERS**
- **BENCHMARK OUR PROGRESS AS A COMMUNITY**
- **SPOTLIGHT GREAT WORK BEING DONE!**



The **10** Focus Areas: Quality of Life in Washoe County

Children in Poverty in Washoe

Per the U.S. Census Bureau, the median household income from 2015-2019 in Washoe County was \$64,791. Yet the estimated household survival budget for a family of four in Washoe County is \$63,369. (ALICE Report)



Median Household Income

Income

Median Household Income County: Washoe

\$64,791
(2015-2019)

Compared to:



NV Counties



U.S. Counties



NV Value
(\$60,365)



US Value
(\$62,843)



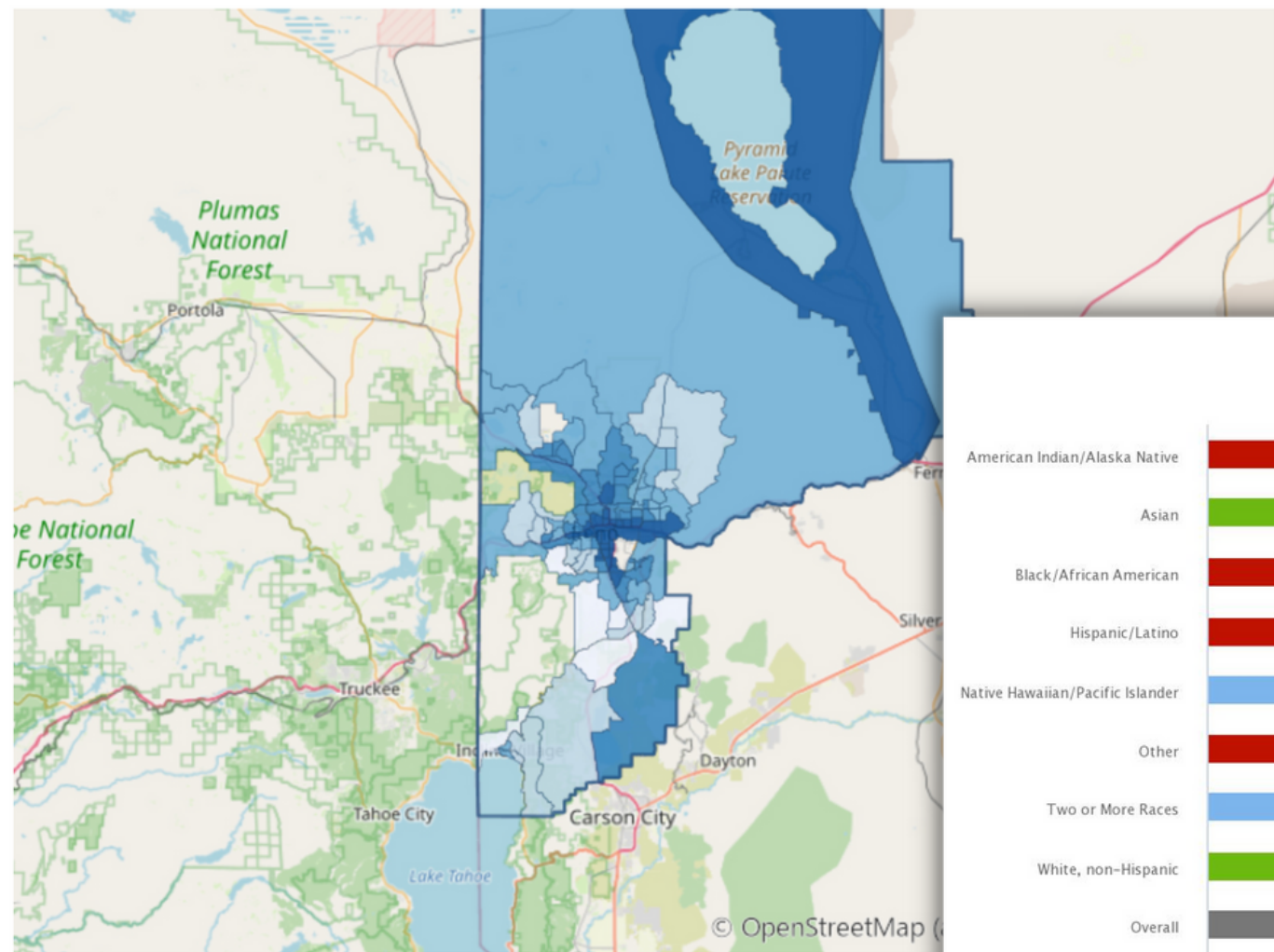
Prior Value
(\$61,155)



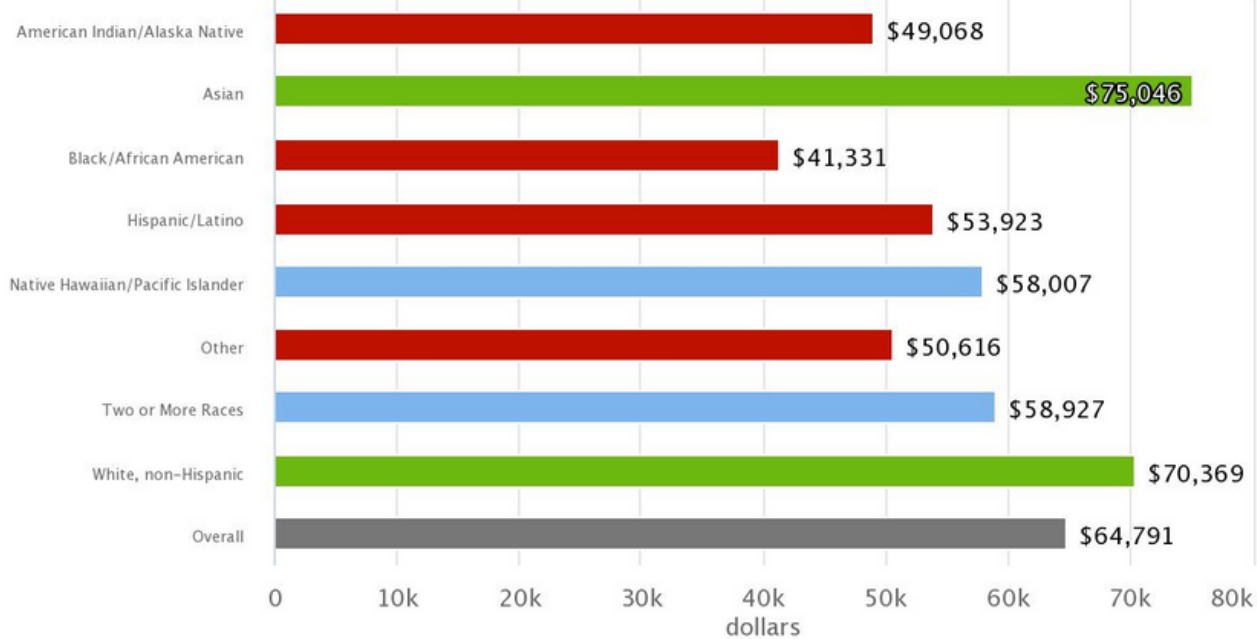
Trend

Median Household Income Census Tract

Measurement Period: 2015-2019
Data Source: American Community Survey



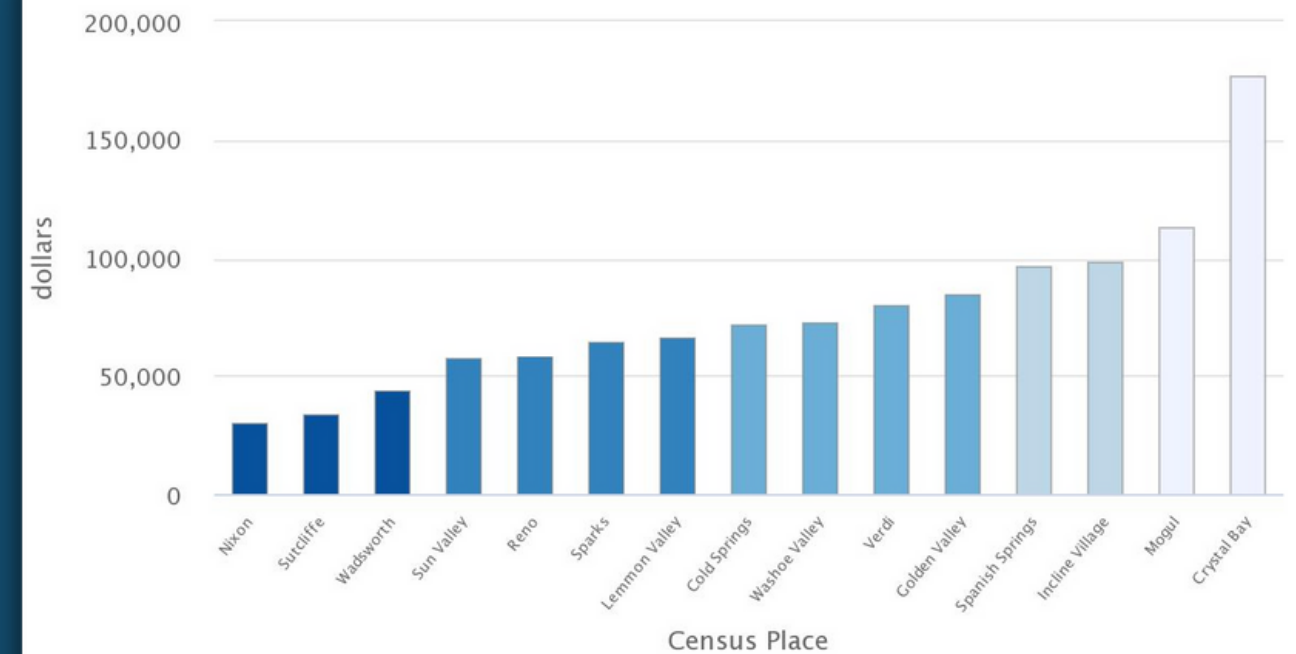
Median Household Income by Race/Ethnicity County: Washoe



Source: American Community Survey (2015-2019)

www.nevadatomorrow.org

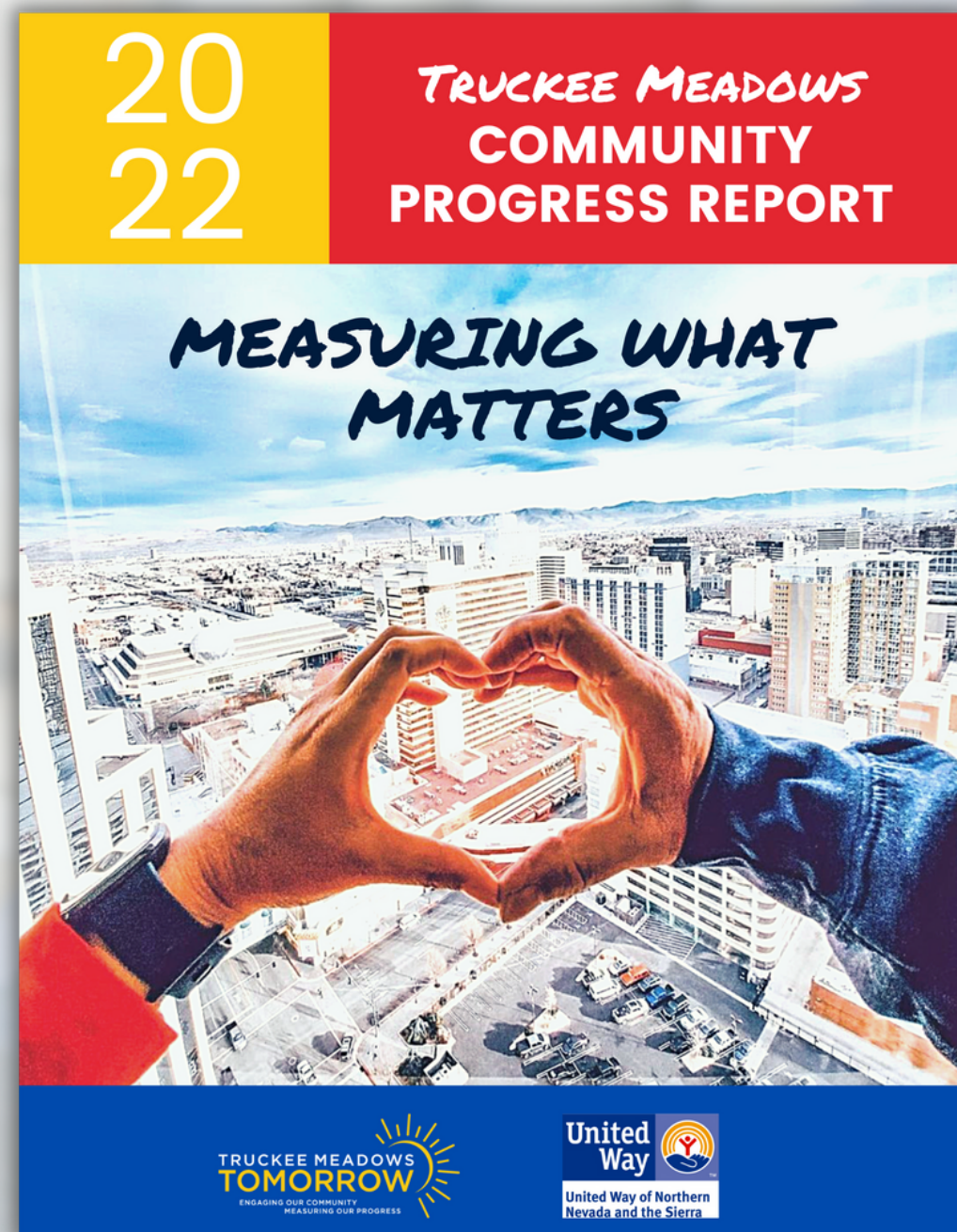
Median Household Income



Source: American Community Survey (2015-2019)

Publish Date:

February 2022



- PRINTED REPORT DISTRIBUTED TO KEY PARTNERS
- ONLINE VERSIONS WITH DYNAMIC MAPS, CHARTS, GRAPHS
- SPOTLIGHT SECTIONS HIGHLIGHTING GREAT WORK IN OUR COMMUNITY
- ANNUAL OR BIENNIAL FUTURE PUBLICATION
- ONE-PAGE EXECUTIVE SUMMARY



Join Us!

Be a part of the movement and be a
Community Progress Report Sponsor!



NEVADA WOMEN'S GIVING CIRCLE | NOVEMBER 2021

Website www.truckeemeadowstomorrow.org

Data Portal www.nevadatomorrow.org

Email Address erica@truckeemeadowstomorrow.org

Thank you!

Contact us if you have any questions.