

SUMMARY: An ordinance modifying the boundaries of county commission districts based on decennial census.

BILL NO. 1658

ORDINANCE NO. 1477

AN ORDINANCE AMENDING CHAPTER 5 OF THE WASHOE COUNTY CODE RELATING TO COUNTY COMMISSIONER ELECTION DISTRICTS BY ESTABLISHING FIVE COUNTY COMMISSIONER ELECTION DISTRICTS THAT ARE AS EQUAL IN POPULATION AS PRACTICABLE AND PROVIDING OTHER MATTERS PROPERLY RELATED THERETO.

THE BOARD OF COUNTY COMMISSIONERS OF THE COUNTY OF WASHOE DO ORDAIN:

SECTION 1. Chapter 5 of the Washoe County Code (Administration and Personnel) is hereby amended by amending Section 5.015 (County commissioner districts: Creation; election of county commissioners; filling of vacancy) to read as set forth in section 3 of this ordinance.

SECTION 2. It is the purpose of this ordinance to comply with the provisions of NRS 244.018 and the Nevada and United States Constitutions by re-establishing five county commissioner election districts that are nearly equal in population as practicable using data from the most recent United States census.

SECTION 3.

5.015 County commissioner districts: Creation; election of county commissioners; filling of vacancy.

1. As used in subsection 2, "Block" and "Blocks" mean the smallest geographical unit whose boundaries were designated by the Bureau of the Census of the United States Department of Commerce in the 2010 pre-census version of its topographically integrated geographic encoding and referencing system.

2. In compliance with chapter 244 of NRS and in reliance upon the most recent decennial census data five county commissioner districts in Washoe County are re-created as follows:

(a) County commissioner district No. 1 is composed of:

(1) In Washoe County, all of census tracts 4, 10.9, 10.14, 11.01, 11.03, 11.04, 11.05, 12.01, 12.02, 13, 23.02, 24.06, 24.07, 24.08, 24.10, 24.11, 33.05, 33.06, 33.07, 33.08, 9803 and 9900

(2) In Washoe County, census tract 3, blocks 1001, 1002, 1003, 1004, 1005, 1006, 1007, 1008, 1009, 1010, 1011, 1012, 1013, 1014, 1015, 1016, 1017, 1018, 1019, 1020, 1021, 1022, 2000, 2001, 2002, 2003, 2004, 2005, 2006, 2007, 2008, 2009, 2010, 2011, 2012, 2013, 2014, 2015, 2016, 2017, 2018, 2019, 2020, 2021, 2022, 2023, 2024, 2025, 2026, 2027, 2028, 2029, 3000, 3001, 3002, 3003, 3004, 3005, 3006, 3007, 3008, 3009, 3010, 3011, 3012, 3013, 3014, 3015, 3016, 3017, 3018, 3019, 4003, 4004, 4005, 4006, 4007, 4008, 4009, 4010, 4011, 4012, 4013, 4014, 4015, 4016, 4017, 4018, 4019, 4020, 4021, 4022, 4023, 4024, 4025 and 4026

(3) In Washoe County, in census tract 10.05, blocks 1006, 1007 and 1008

(4) In Washoe County, in census tract 10.08, blocks 3000, 3001, 3002, 3003 and 3004

(5) In Washoe County, in census tract 10.13, blocks 1058, 1059, 1060, 1061, 1062, 1063, 1064, 1066, 3000, 3001, 3002, 3003, 3004, 3005, 3006, 3007, 3008, 3009, 3010, 3011, 3012, 3013, 3014, 3015, 3016, 3017, 3018, 3019, 3020, 3021, 3022, 3023, 3024, 3025, 3026, 3027, 3028, 3033, 3034, 3045, 3046, 3047, 3048, 3052, 3053, 3054, 3055, 3057, 3058, 3066, 4004, 4006, 4007, 4009, 4032 and 4033

(6) In Washoe County, in census tract 10.15, blocks 1000, 1001, 1002, 1003, 1004, 1005, 1006, 1007, 1008, 1009, 1010, 1011, 1012, 1013, 1014, 1015, 1016, 1017, 1018, 1019, 1020, 1021, 1022, 1023, 1024, 1025, 1026, 1027, 1028, 1029, 1030, 1031, 1032, 1033, 1034, 2000, 2001, 2002, 2003, 2004, 2005, 2006, 2007, 2008, 2009, 2010, 2011, 2012, 2013, 2014, 3000, 3001, 3002, 3003, 3004, 3005, 3006, 3007, 3008, 3009, 3010, 3011, 3012, 3013, 3014, 3015, 3016, 4001, 4002, 4003, 4004, 4005, 4006, 4007, 4008, 4009, 4010, 4011, 4012, 4013, 4014, 4015, 4016, 4017, 4018, 4019, 4020, 4021, 4022, 4023, 4024, 4025, 4026, 4027, 4028, 4029, 4030, 4031, 4032, 4033 and 4034

(7) In Washoe County, in census tract 24.01, blocks 1008, 1011, 1012, 1013, 1014, 1015, 1016, 1017, 1018, 1019, 1020, 1021, 1022, 1023, 1024, 1025, 1026, 1027, 2000, 2001, 2002, 2003, 2004, 2005, 2006, 2007, 2008, 2009, 2010, 2011, 2012, 2013, 2014, 2015, 2016, 2017, 2018, 2019, 2020, 2021, 2022, 2023, 2024 and 2025

(8) In Washoe County, in census tract 24.12, blocks 1000, 1001, 1002, 1003, 1004, 1005, 1006, 2004, 2005, 2006, 2007, 2009, 2010, 2011, 2012, 2013, 2015, 2016, 2017, 2019, 2020, 2021, 2022, 2023, 2024, 2025, 2026, 2027, 2028, 2029, 2030, 2031, 2032, 2035 and 2036

(9) In Washoe County, in census tract 25, blocks 1023, 1024, 1025, 1026, 1027, 1028, 1029 and 1030

(10) In Washoe County, in census tract 32.04, blocks 2001, 2002, 2003, 2004, 2005, 2009, 2010, 2011, 2021, 2022, 2023, 2028, 2029, 2031, 2034, 2035, 2039, 2041, 2086, 2087, 2088, 2098 and 2099

(11) In Washoe County, in census tract 33.09, blocks 1000, 1001, 1002, 1003, 1004, 1005, 1006, 1007, 1008, 1009, 1010, 1011, 1012, 1013, 1014, 1015, 1016, 1017, 2000, 2001, 2002, 2003, 2004, 2005, 2006, 2007, 2008, 2009, 2010, 2011, 2012, 2013, 2014, 2015, 2016, 2017, 2018, 2019, 2020, 2021, 2022, 2023, 2024, 2025, 2026, 2027, 2028, 2029, 2030, 2031, 2032, 2033, 2034, 2035, 2036, 3000, 3001, 3002, 3003, 3004, 3005, 3006, 3007, 3008, 3009, 3010, 3011, 3012, 3013, 3014, 3015, 3016, 3017, 3018, 3019, 3020, 3021, 3022, 3023, 3024, 3025, 3026, 3027, 3028, 3029, 3030, 3032, 3033, 3034, 3035, 3036, 3037, 3038, 3039, 3040, 3041, 3042, 3043, 3044, 3045, 3046, 3050, 3051, 3053, 3054, 3055, 3056, 3057, 3058, 3059, 3060, 4000, 4001, 4002, 4003, 4004, 4005, 4006, 4007, 4008, 4009, 4010, 4011, 4012, 4013, 4014, 4015, 4016, 4017, 4018, 4019, 4020, 4021, 4022, 4023, 4024, 4025, 4026, 4027, 4028, 4029, 4030 and 4031;

(b) County commissioner district No. 2 is composed of

(1) In Washoe County, census all of census tracts 10.10, 10.11, 10.12, 21.04, 21.05, 22.04, 22.05, 22.06, 22.07, 22.08, 22.09, 22.10, 32.02 and 32.03

(2) In Washoe County, in census tract 10.05, blocks 1000, 1001, 1002, 1003, 1004, 1005, 1009, 1010, 1011, 1012, 1013, 1014, 1015, 1016, 1017, 1018, 1019, 1020, 1021, 1022, 1023, 1024, 1025, 1026, 2000, 2001, 2002, 2003, 2004, 2005, 2006, 2007, 2008, 2009, 2010, 2011, 2012, 2013, 2014, 2015, 2016, 2017, 2018, 2019, 2020, 2021, 2022, 2023, 2024, 2025, 2026 and 2027

(3) In Washoe County, in census tract 10.08, blocks 1000, 1001, 1002, 1003, 1004, 1005, 2000, 2001, 2002, 2003 and 2004

(4) In Washoe County, in census tract 10.13, blocks 1000, 1001, 1002, 1003, 1004, 1005, 1006, 1007, 1008, 1009, 1011, 1012, 1013, 1014, 1015, 1016, 1017, 1018, 1019, 1020, 1021, 1022, 1023, 1024, 1025, 1026, 1027, 1028, 1029, 1030, 1031, 1032, 1033, 1034, 1035, 1036, 1037, 1038, 1039, 1040, 1041, 1042, 1043, 1044, 1045, 1046, 1047, 1048, 1049, 1050, 1051, 1052, 1053, 1054, 1055, 1056, 1057, 1065, 1067, 2000, 2001, 2002, 2003, 2004, 2005, 2006, 2007, 2008, 2009, 2010, 2011, 2012, 2013, 2014, 2015, 2016, 2017, 2018, 2019, 2020, 2021, 2022, 2023, 2025, 2026, 2027, 2028, 2030, 2031, 2032, 2033, 2034, 2035, 2036, 2037, 2038, 3029, 3030, 3031, 3032, 3035, 3036, 3037, 3038, 3039, 3040, 3041, 3042, 3043, 3044, 3049,

3050, 3051, 3056, 3059, 3060, 3061, 3062, 3063, 3064, 3065,  
3067, 3068, 3069, 3070, 4001, 4005, 4008, 4010, 4011, 4012,  
4013, 4014, 4015, 4016, 4017, 4018, 4019, 4020, 4021, 4022,  
4023, 4024, 4025, 4026, 4028, 4029, 4030, 4031 and 4034

(5) In Washoe County, in census tract 10.15, block 4000

(6) In Washoe County, in census tract 21.03, blocks 1000,  
1001, 1002, 1003, 1004, 1005, 1006, 1007, 1008, 1009, 1010,  
1011, 1012, 1013, 1014, 1015, 1016, 1017, 1018, 1019, 1020,  
1021, 1022, 1023, 1024, 1025, 1026, 1027, 1028, 1029, 2000,  
2001, 2002, 2003, 2004, 2006, 2007, 2008, 2009, 2010, 2011,  
2012, 2013, 2014, 2015, 2016, 2017, 2018, 2019, 2020, 2021,  
2022, 2023, 2024, 2025, 2026, 2027, 2028, 2029, 2030, 2031,  
2032, 2033, 2034, 2035, 2036, 2037 and 2038

(7) In Washoe County, in census tract 21.06, blocks 1000,  
1001, 1002, 1003, 1004, 1005, 1006, 1007, 1009, 1010, 1011, 1012,  
2000, 2001, 2002, 2003, 2004, 2005, 2006, 2007, 2008, 2009,  
2010, 2011, 3000, 3001, 3002, 3003, 3004, 3005, 3006, 3007,  
3008, 3009, 3010, 3011 and 3012

(8) In Washoe County, in census tract 22.11, blocks 1005,  
1006, 1007, 1008, 1009, 1010, 1011, 1012, 1013, 1014, 1015,  
1016, 1017 and 1018

(9) In Washoe County, in census tract 22.12, blocks 1000,  
1001, 2000, 2001, 2002, 2003, 2004, 3000, 3001, 3002, 3003, 4008  
and 4009

(10) In Washoe County, in census tract 31.01 block 3097

(11) In Washoe County, in census tract 32.04, blocks 1000,  
1001, 1002, 1003, 1004, 1005, 1006, 1007, 1008, 1009, 1010,  
1011, 1012, 1013, 1014, 1015, 1016, 1017, 1018, 1019, 1020,  
1021, 1022, 1023, 1024, 1025, 1026, 1027, 1028, 1029, 1030,  
1031, 1032, 1033, 1034, 1035, 1036, 1037, 1038, 2000, 2006,  
2007, 2008, 2012, 2013, 2014, 2015, 2016, 2017, 2018, 2019,  
2020, 2024, 2025, 2026, 2027, 2030, 2032, 2033, 2036, 2037,  
2038, 2040, 2042, 2043, 2044, 2045, 2046, 2047, 2048, 2049,  
2050, 2051, 2052, 2053, 2054, 2055, 2056, 2057, 2058, 2059,  
2060, 2061, 2062, 2063, 2064, 2065, 2066, 2067, 2068, 2069,  
2070, 2071, 2072, 2073, 2074, 2075, 2076, 2077, 2078, 2079,  
2080, 2081, 2082, 2083, 2084, 2085, 2089, 2090, 2091, 2092,  
2093, 2094, 2095, 2096 and 2097

(12) In Washoe County, in census tract 33.09, blocks 2037,  
3031, 3047, 3048, 3049 and 3052

(13) In Washoe County, in census tract 35.01, block 3280

(14) In Washoe County, in census tract 9800, block 1043;

(c) County commissioner district No. 3 is composed of:

(1) In Washoe County, all of census tracts 1.01, 1.02,  
2.01, 2.02, 7, 9, 14, 15.01, 15.02, 17.01, 18.01, 18.02, 19.01  
and 19.02, 21.07 and 27.03

(2) In Washoe County, in census tract 3, blocks 1000, 4000, 4001 and 4002

(3) In Washoe County, in census tract 17.02, blocks 1006, 1007, 1008, 1009, 1010, 1011, 1012, 1013, 1014, 1015, 1016, 1017, 1018, 1019, 1020, 1021, 1022, 1023, 1024, 1025, 1026, 1032, 1034, 1035, 1036, 1037, 1042, 1043, 1044, 1045, 1046, 2000, 2001, 2002, 2003, 2004, 2005, 2006, 2007, 2008, 2009, 2010, 2011, 2012, 2013, 2014, 2015, 3000, 3001, 3002, 3003, 3004, 3005, 3006, 3007, 3008, 3009, 3010, 3011, 3012, 3013, 3014, 3015, 3016, 3017, 3018, 3019, 3020, 3021 and 3022

(4) In Washoe County, in census tract 21.06, block 1008

(5) In Washoe County, in census tract 22.11, blocks 1000, 1001, 1002, 1003, 1004, 2000, 2001, 2002, 2003, 2004, 2005, 2006, 2007, 2008, 2009, 2010, 2011, 2012, 2014, 2015 and 2016

(6) In Washoe County, in census tract 22.12, blocks 4000, 4001, 4002, 4003, 4004, 4005, 4006 and 4007

(7) In Washoe County, in census tract 24.01, blocks 1000, 1001, 1002, 1003, 1004, 1005, 1006, 1007, 1009, 1010 and 1028

(8) In Washoe County, in census tract 24.12, blocks 2014 and 2018

(9) In Washoe County, in census tract 25, blocks 1000, 1001, 1002, 1003, 1004, 1005, 1006, 1007, 1008, 1009, 1010, 1011, 1012, 1013, 1014, 1015, 1016, 1017, 1018, 1019, 1020, 1021, 1022, 2000, 2001, 2002, 2003, 2004, 2005, 2006, 2007, 2008, 2009, 2010, 2011, 2012, 2013, 2014, 2015, 2016, 2017, 2018, 2019, 2020, 2021, 2022, 2023, 2024, 2025, 2026, 2027, 2028, 2029, 2030, 2031, 2032, 2033, 2034, 2035, 2036, 2037, 3000, 3001, 3002, 3003, 3004, 3005, 3006, 3007, 3008, 3009, 3010, 3011, 3012, 3013, 3014, 3015, 3016, 3017 and 3018

(10) In Washoe County, in census tract 26.17, blocks 1000, 1001, 1002, 1003, 1004, 1005, 1006, 1007, 2000, 2001, 2002, 2003, 2004, 2005, 2006, 2007, 2008, 2009, 2010, 2011, 2012, 2013, 2014, 2015, 2016, 2017, 2018, 2019, 2020, 2021, 2022, 2023, 2024, 2025, 2026, 2027, 2028, 2029, 2030, 2031, 2032, 2033, 2034, 2035, 2036, 2037, 2038, 2039, 2040, 2041, 2042, 2043, 2044, 2045, 2046, 2047, 2048, 3033, 3034, 3035, 3036, 3037, 3038, 3039, 3040, 3041, 3042, 3043, 3045, 3046, 3047, 3048, 3049, 3054, 3055, 3056, 3057, 3058, 3059, 3060, 3077 and 3078

(11) In Washoe County, in census tract 26.19, blocks 4005, 4006, 4007, 4008, 4009, 4010, 4011, 4012, 4013, 4014, 4015, 4016, 4017, 4018, 4019, 4020, 4021, 4022, 4023, 4024, 4025, 4026, 4027, 4028, 4029, 4030, 4031 and 4032

(12) In Washoe County, in census tract 27.04, blocks 1008, 1009, 1010, 1011, 1012, 1013, 1014, 1015, 1016, 1017, 1018, 1019, 1020, 1021, 1022, 1023, 1024, 1025, 2000, 2001, 2002, 2003,

2004, 2009, 2011, 2012, 2013, 2015, 2016, 3016, 3017, 3018, 3019, 3020, 3021, 3023, 3028, 3029, 3030, 3031, 3032, 3033 and 3037

(13) In Washoe County, in census tract 27.05, blocks 3000, 3001, 3002, 3003, 3004, 3005, 3006, 3007, 3008, 3009, 3010, 3011, 3012, 3013, 3014, 3015, 3016, 3017, 3018, 3019, 3020, 3021, 3022, 3023, 3024, 3025, 3026, 3027, 3928, 3029, 3030, 3031 and 3032

(14) In Washoe County, in census tract 27.07, blocks 2000, 2001, 2002, 2003, 2004, 2005, 2006, 2007, 2008, 2009, 2010, 2011, 2012, 2013, 2014, 3000, 3001, 3002, 3003, 3004, 3005, 3006, 3007, 3008, 3009, 3010, 3011, 3012, 3013, 3014, 3015 and 3016

(15) In Washoe County, in census tract 30, blocks 3015, 5010 and 6025

(16) In Washoe County, in census tract 31.01, blocks 3011, 3012, 3013, 3014, 3015, 3016, 3017, 3018, 3019, 3020, 3021, 3022, 3023, 3024, 3025, 5026, 3027, 3028, 3029, 3030, 3031, 3032, 3033, 3034, 3035, 3036, 3037, 3038, 3039, 3040, 3041, 3042, 3043, 3044, 3045, 3046, 3047, 3048, 3049, 3050, 3051, 3052, 3053, 3054, 3055, 3056, 3057, 3058, 3059, 3060, 3061, 3062, 3063, 3064, 3065, 3066, 3098, 3099, 3100, 3101, 3102, 3103, 3104, 3105, 3106, 3107, 3108, 3109, 3110, 3111, 3112, 3113, 3114, 3115, 3121, 3122 and 3123

(17) In Washoe County, in census tract 9800, blocks 1000, 1001, 1002, 1003, 1004, 1005, 1006, 1007, 1008, 1009, 1010, 1011, 1012, 1013, 1014, 1015, 1016, 1017, 1018, 1019, 1020, 1021, 1022, 1023, 1024, 1025, 1026, 1027, 1028, 1029, 1030, 1031, 1032, 1033, 1034, 1035, 1036, 1037, 1038, 1039, 1040, 1041, 1042, 1044, 1045, 1046, 1047, 1048, 1049, 1050, 1051, 1052, 1053, 1054, 1055, 1056, 1057, 1058 and 1059

(18) In Washoe County, in census tract 9802, blocks 1000, 1001, 1002, 1003, 1004, 1005, 1022, 1023, 1024, 1025 and 1026;

(d) County commissioner district No. 4 is composed of:

(1) In Washoe County, in all of census tracts 29.02, 31.05, 31.06, 31.08, 31.09, 31.10, 35.07, 35.08, 35.09, 35.10, 35.11, 35.12, 35.13 and 35.14

(2) In Washoe County, in census tract 21.03, block 2005

(3) In Washoe County, in census tract 27.05, blocks 1001, 1002 and 1017

(4) In Washoe County, in census tract 29.01, blocks 1000, 1001, 1002, 1003, 1004, 1005, 1006, 1007, 1008, 1009, 1010, 1011, 1012, 1013, 1014, 1015, 1016, 1017, 1018, 1019, 1020, 1021, 2000, 2001, 2002, 2003, 2004, 2005, 2006, 2007, 2008, 2009, 2010, 2011, 2012, 2013, 2014, 2015, 3000, 3001, 3002, 3003, 3004, 3005, 3006, 3007, 3008, 3009, 3010, 3011, 3012,

3013, 3015, 3016, 3017, 3019, 3020, 3021 and 3022

(5) In Washoe County, in census tract 30, blocks 1000, 1001, 1002, 1003, 1004, 1005, 1006, 1007, 1008, 1009, 1010, 1011, 1012, 2000, 2001, 2002, 2003, 2004, 2005, 2006, 2007, 2008, 2009, 2010, 2011, 2012, 2013, 2014, 3000, 3001, 3002, 3003, 3004, 3005, 3006, 3007, 3008, 3009, 3010, 3011, 3012, 3013, 3014, 3016, 3017, 4000, 4001, 4002, 4003, 4004, 4005, 4006, 4007, 4008, 4009, 4010, 4011, 4012, 5000, 5001, 5002, 5003, 5004, 5005, 5006, 5007, 5008, 5009, 6000, 6001, 6002, 6003, 6004, 6005, 6006, 6007, 6008, 6009, 6010, 6011, 6012, 6013, 6014, 6015, 6016, 6017, 6018, 6019, 6020, 6021, 6022, 6023 and 6024

(6) In Washoe County, in census tract 31.01, blocks 1000, 1001, 1002, 1003, 1004, 1005, 1006, 1007, 2000, 2001, 2002, 2003, 2004, 2005, 2006, 2007, 2008, 2009, 2010, 2011, 2012, 2013, 2014, 2015, 2016, 2017, 2018, 2019, 2020, 2021, 2022, 2023, 2024, 2025, 2026, 2027, 2028, 2029, 2030, 2031, 2032, 2033, 2034, 2035, 2036, 2037, 2038, 2039, 2040, 2041, 2042, 2043, 2044, 2045, 2046, 2047, 2048, 2049, 2050, 2051, 2052, 2053, 2054, 3000, 3001, 3002, 3003, 3004, 3005, 3006, 3007, 3008, 3009k, 3010, 3067, 3068, 3069, 3070, 3071, 3072, 3073, 3074, 3075, 3076, 3078, 3079, 3080, 3081, 3082, 3083, 3084, 3085, 3086, 3087, 3088, 3089, 3090, 3091, 3092, 3093, 3094, 3095, 3116, 3117, 3118, 3119, 3120, 4000, 4001, 4002, 4003, 4004, 4005, 4006, 4007, 4008, 4009, 4010 and 4011

(7) In Washoe County, in census tract 35.01, blocks 1968, 1969, 1970, 1971, 1972, 1973, 1974, 3086, 3087, 3088, 3089, 3090, 3091, 3092, 3093, 3094, 3095, 3096, 3097, 3098, 3099, 3101, 3104, 3105, 3106, 3107, 3108, 3109, 3110, 3111, 3113, 3114, 3118, 3119, 3120, 3121, 3122, 3123, 3124, 3125, 3126, 3127, 3128, 3129, 3130, 3131, 3133, 3134, 3135, 3136, 3137, 3138, 3139, 3140, 3141, 3142, 3144, 3145, 3146, 3147, 3148, 3139, 3150, 3151, 3152, 3153, 3154, 3155, 3156, 3157, 3158, 3159, 3160, 3161, 3162, 3163, 3164, 3165, 3166, 3167, 3168, 3169, 3170, 3171, 3172, 3173, 3174, 3175, 3176, 3177, 3178, 3179, 3180, 3181, 3182, 3183, 3185, 3186, 3187, 3188, 3189, 3190, 3191, 3193, 3194, 3195, 3196, 3197, 3198, 3199, 3200, 3201, 3202, 3203, 3204, 3205, 3206, 3207, 3208, 3209, 3210, 3211, 3212, 3213, 3214, 3215, 3216, 3218, 3219, 3220, 3221, 3222, 3226, 3227, 3228, 3229, 3230, 3231, 3232, 3233, 3234, 3235, 3236, 3237, 3238, 3239, 3240, 3241, 3242, 3243, 3244, 3245, 3246, 3247, 3248, 3239, 3250, 3251, 3252, 3253, 3254, 3255, 3256, 3257, 3258, 3259, 3260, 3261, 3262, 3263, 3264, 3265, 3266, 3267, 3268, 3269, 3270, 3271, 3272, 3273, 3274, 3275, 3276, 3277, 3278, 3279, 3281, 3282, 3283, 3284, 3286, 3287, 3289, 3291, 3292, 3293, 3294, 3295, 3296, 3297, 3298,

3299, 3300, 3301, 3302, 3303, 3304, 3305, 3306, 3307, 3308,  
3309, 3310, 3311, 3312, 3313, 3314, 3315, 3316, 3317, 3318,  
3319, 3320, 3321, 3339, 3342, 3343, 3345, 3346, 3347, 3348,  
3350, 3351, 3354 and 3355

(8) In Washoe County, in census tract 35.03, blocks 1000,  
1001, 1002, 1003, 1004, 1005, 1006, 1007, 1008, 1009, 1010,  
1011, 1012, 1013, 1014, 1015, 1016, 1017, 1022, 1023, 1024,  
1025, 1027, 1028, 1043, 1044, 1050, 2000, 2001, 2002, 2003,  
2004, 2005, 2006, 2007, 2008, 2009, 2010, 2011, 2012, 2013,  
2014, 2015, 2016, 2017, 2018, 2019, 2020, 2021, 2022, 2023,  
2024, 3000, 3001, 3002, 3003, 3004, 3005, 3006, 3007, 3008,  
3009, 3010, 3011 and 3012

(9) In Washoe County, in census tract 35.04, blocks 1000,  
1001, 1002, 1003, 1004, 1005, 1006, 1007, 1008, 1009, 1010,  
1011, 1012, 1013, 1014, 1015, 1016, 1017, 1018, 1019, 1020,  
1021, 1022, 1023, 1024, 1025, 1026, 2000, 2001, 2002, 2003,  
2004, 2005, 2006, 2007, 2008, 2009, 2010, 2011, 2012, 2013,  
2014, 2015, 2016, 2017, 2018, 2019, 2020, 2021, 2022, 2023,  
2024, 2025, 2026, 3001, 3002, 3003, 3004, 3005, 3006, 3007,  
3008, 3009, 3010, 3011, 3012, 3013, 3014, 3015, 3016, 3017,  
3018, 3019, 3020, 3021, 3023, 3024, 3025, 3026, 3027, 3028,  
3029, 3030, 3031, 4000, 4001, 4002, 4003, 4004, 4005, 4006,  
4007, 4008, 4009, 4010, 4011, 4012, 4013, 4014, 4015, 4016 and  
4017

(10) In Washoe County, in census tract 35.15, blocks 1000,  
1001, 1002, 1003, 1004, 1005, 1006, 1007, 1008, 1009, 1010,  
1011, 1012, 1013, 1014, 1015, 1016, 1017, 1018, 1019, 1020,  
1021, 1022, 1023, 1024, 1025, 1026, 1027, 2001, 2002, 2003,  
2004, 2005, 2006, 2010, 2011, 2012, 2013, 2014, 2015, 2016,  
2017, 2018, 2019, 2020, 2021, 2022, 2023, 2024, 2025, 2026,  
2027, 2028, 2029, 2030, 2031, 2032, 2033, 2034, 2035, 2036,  
2037, 2038, 3000, 3001, 3002, 3003, 3004, 3005, 3006, 3007,  
3008, 3009, 3010, 3011, 3012, 3013, 3014, 3015, 3016, 3017,  
3018, 3019, 3020, 3021, 3022, 3023, 3024, 3025, 3026, 3027,  
3028, 3029, 3030, 3031, 3032, 3033, 3034, 3035, 4004, 4005,  
4006, 4007, 4008, 4011, 4012, 4013, 4014, 4017, 4018, 4019,  
4020, 4021, 4022, 4023, 4024, 4025, 4026, 4027, 4028, 4029,  
4030, 4031, 4032, 4033, 4034, 4035, 4036, 4053, 4054, 4055,  
4060, 4061, 4062, 4063, 4065, 4066, 4068, 4069, 4070 and 4071

(11) In Washoe County, in census tract 9402, blocks 1222,  
1223, 1224, 1225, 1226, 1227, 1228, 1229, 1230, 1231, 1232,  
1233, 1234, 1235, 1236, 1237, 1238, 1239, 1240, 1241, 1242,  
1243, 1244, 1245, 1246, 1247, 1248, 1253, 1254, 1256, 1257,  
1258, 1259, 1260, 1261, 1262, 1263, 1264, 1266, 1267, 1268,  
1269, 1270, 1271, 1272, 1273, 1275, 1275, 1276, 1277, 1278,  
1279, 1280, 1281, 1282, 1283, 1284, 1285, 1286, 1287, 1288,



1289, 1290, 1291, 1292, 1293, 1294, 1295, 1296, 1297, 1298,  
1299, 1300, 1301, 1302, 1303, 1304, 1305, 1306, 1307, 1308,  
1309, 1310, 1311, 1312, 1313, 1314, 1314, 1315, 1316, 1317,  
1318, 1319, 1320, 1321, 1322, 1323, 1324, 1325, 1326, 1327,  
1328, 1329, 1330, 1331, 1332, 1333, 1334, 1335, 1336, 1337,  
1338, 1339, 1340, 1341, 1342, 1343, 1344, 1345, 1346, 1347,  
1348, 1349, 1350, 1351, 1352, 1353, 1354, 1355, 1356, 1357,  
1358, 1359, 1360, 1361, 1362, 1363, 1364, 1365, 1366, 1367,  
1368, 1369, 1370, 1371, 1372, 1373, 1374, 1375, 1376, 1377,  
1378, 1379, 1380, 1381, 1382, 1383, 1384, 1385, 1386, 1387,  
1388, 1389, 1390, 1391, 1392, 1393, 1394, 1395, 1396, 1397,  
1398, 1399, 1400, 1401, 1402, 1403, 1404, 1405, 1406, 1407,  
1408, 1409, 1413, 1414, 1415, 1416, 1417, 1419, 1430 and 1431;

(e) County commissioner district No. 5 is composed of:

(1) In Washoe County, all of census tracts 23.01, 23.02,  
24.09 26.03, 26.10, 26.11, 26.12, 26.13, 26.14, 26.15, 26.16,  
26.18, 27.06, 28.01, 28.02, 9801 and 9901

(2) In Washoe County, in census tract 17.02, blocks 1000,  
1001, 1002, 1003, 1004, 1005, 1027, 1028, 1029, 1030, 1031,  
1033, 1038, 1039, 1040 and 1041

(3) In Washoe County, in census tract 24.12, blocks 2000,  
2001, 2002, 2003, 2008, 2033, 2034 and 2037

(4) In Washoe County, in census tract 26.17, blocks 3000,  
3001, 3002, 3003, 3004, 3005, 3006, 3007, 3008, 3009, 3010,  
3011, 3012, 3013, 3014, 3015, 3016, 3017, 3018, 3019, 3020,  
3021, 3022, 3023, 3024, 3025, 3026, 3027, 3028, 3029, 3030,  
3031, 3032, 3044, 3050, 3051, 3052, 3053, 3061, 3062, 3063,  
3064, 3065, 3066, 3067, 3068, 3069, 3070, 3071, 3072, 3073,  
3074, 3075 and 3076

(5) In Washoe County, in census tract 26.19, blocks 1000,  
1001, 1002, 1003, 1004, 1005, 1006, 1007, 1008, 1009, 1010,  
1011, 1012, 1013, 1014, 1015, 1016, 1017, 1018, 1019, 1020,  
1021, 1022, 1023, 1024, 1025, 1026, 1027, 1028, 1029, 1030,  
1031, 1032, 1033, 1034, 1035, 1036, 1037, 1038, 1039, 1040,  
1041, 1042, 1043, 1044, 1045, 1046, 1047, 1048, 1049, 2000,  
2001, 2002, 2003, 2004, 2005, 2006, 2007, 2008, 2009, 2010,  
2011, 2012, 2013, 2014, 2015, 2016, 2017, 2018, 2019, 2020,  
2021, 2022, 2023, 2024, 2025, 2026, 2027, 2028, 2029, 2030,  
2031, 2032, 2033, 2034, 2035, 2036, 2037, 2038, 2039, 2040,  
2041, 2042, 2043, 2044, 2045, 2046, 2047, 2048, 2049, 2050,  
2051, 2052, 2053, 2054, 2055, 2056, 2057, 2058, 2059, 2060,  
2061, 2062, 2063, 2064, 2065, 2066, 2067, 2068, 2069, 2070,  
2071, 2072, 2073, 2074, 2075, 3000, 3001, 3002, 3003, 3004,  
3005, 3006, 3007, 3008, 3009, 3010, 3011, 3012, 3013, 3014,  
3015, 3016, 3017, 3018, 3019, 3020, 3021, 3022, 3023, 3024,  
3025, 3026, 3027, 3028, 3029, 3030, 3031, 3032, 3033, 3034,

3035, 3036, 3037, 3038, 3039, 3040, 3041, 3042, 3043, 3044,  
3045, 3046, 3047, 3048, 3049, 3050, 3051, 3052, 3053, 3054,  
3055, 3056, 3057, 3058, 3059, 3060, 3061, 3062, 3063, 3064,  
3065, 3066, 3067, 3068, 3069, 3070, 3071, 3072, 3073, 4000,  
4001, 4002, 4003 and 4004

(6) In Washoe County, in census tract 27.04, blocks 1000,  
1001, 1002, 1003, 1004, 1005, 1006, 1007, 2005, 2006, 2007,  
2008, 2010, 2014, 2017, 2018, 2019, 2020, 3000, 3001, 3002,  
3003, 3004, 3005, 3006, 3007, 3008, 3009, 3010, 3011, 3012,  
3013, 3014, 3015, 3022, 3024, 3025, 3026, 3027, 3034, 3035 and  
3036

(7) In Washoe County, in census tract 27.05, blocks 1000,  
1003, 1004, 1005, 1006, 1007, 1008, 1009, 1010, 1011, 1012,  
1013, 1014, 1015, 1016, 1018, 1019, 1020, 1021, 1022, 1023,  
1024, 1025, 1026, 1027, 1028, 1029, 1030, 1031, 1032, 1033,  
1034, 1035, 1036, 1037, 1038, 1039, 1040, 1041, 1042, 1043,  
1044, 1045, 1046, 2000, 2001, 2002, 2003, 2004, 2005, 2006,  
2007, 2008, 2009, 2010, 2011, 2012, 2013, 2014, 2015, 2016,  
2017, 2018, 2019, 2020, 2021, 2022, 2023, 2024, 2025, 2026;  
2027, 2028, 2029, 2030, 2031, 2032, 2033, 2034, 2035, 2036 and  
3009

(8) In Washoe County, in census tract 27.07, blocks 1000,  
1001, 1002, 1003, 1004, 1005, 1006, 1007, 1008, 1009, 1010,  
1011, 1012, 1013, 1014, 1015, 1016, 1017 and 1018

(9) In Washoe County, in census tract 29.01, blocks 3014  
and 3018

(10) In Washoe County, in census tract 35.01, blocks 1000,  
1001, 1002, 1003, 1004, 1005, 1006, 1007, 1008, 1009, 1010,  
1011, 1012, 1013, 1014, 1015, 1016, 1017, 1018, 1019, 1020,  
1021, 1022, 1023, 1024, 1025, 1026, 1027, 1028, 1029, 1030,  
1031, 1032, 1033, 1034, 1035, 1036, 1037, 1038, 1039, 1040,  
1041, 1042, 1043, 1044, 1045, 1046, 1047, 1048, 1049, 1050,  
1051, 1052, 1053, 1054, 1055, 1056, 1057, 1058, 1059, 1060,  
1061, 1062, 1063, 1064, 1065, 1066, 1067, 1068, 1069, 1070,  
1071, 1072, 1073, 1074, 1075, 1076, 1077, 1078, 1079, 1080,  
1081, 1082, 1083, 1084, 1085, 1086, 1087, 1088, 1089, 1090,  
1091, 1092, 1093, 1094, 1095, 1096, 1097, 1098, 1099, 1100,  
1101, 1102, 1103, 1104, 1105, 1106, 1107, 1108, 1109, 1110,  
1111, 1112, 1113, 1114, 1115, 1116, 1117, 1118, 1119, 1120,  
1121, 1122, 1123, 1124, 1125, 1126, 1127, 1128, 1129, 1130,  
1131, 1132, 1133, 1134, 1135, 1136, 1137, 1138, 1139, 1140,  
1141, 1142, 1143, 1144, 1145, 1146, 1147, 1148, 1149, 1150,  
1151, 1152, 1153, 1154, 1155, 1156, 1157, 1158, 1159, 1160,  
1161, 1162, 1163, 1164, 1165, 1166, 1167, 1168, 1169, 1170,  
1171, 1172, 1173, 1174, 1175, 1176, 1177, 1178, 1179, 1180,  
1181, 1182, 1183, 1184, 1185, 1186, 1187, 1188, 1189, 1190,

1191, 1192, 1193, 1194, 1195, 1196, 1197, 1198, 1199, 1200,  
1201, 1202, 1203, 1204, 1205, 1206, 1207, 1208, 1209, 1210,  
1211, 1212, 1213, 1214, 1215, 1216, 1217, 1218, 1219, 1220,  
1221, 1222, 1223, 1224, 1225, 1226, 1227, 1228, 1229, 1230,  
1231, 1232, 1233, 1234, 1235, 1236, 1237, 1238, 1239, 1240,  
1241, 1242, 1243, 1244, 1245, 1246, 1247, 1248, 1249, 1250,  
1251, 1252, 1253, 1254, 1255, 1256, 1257, 1258, 1259, 1260,  
1261, 1262, 1263, 1264, 1265, 1266, 1267, 1268, 1269, 1270,  
1271, 1272, 1273, 1274, 1275, 1276, 1277, 1278, 1279, 1280,  
1281, 1282, 1283, 1284, 1285, 1286, 1287, 1288, 1289, 1290,  
1291, 1292, 1293, 1294, 1295, 1296, 1297, 1298, 1299, 1300,  
1301, 1302, 1303, 1304, 1305, 1306, 1307, 1308, 1309, 1310,  
1311, 1312, 1313, 1314, 1315, 1316, 1317, 1318, 1319, 1320,  
1321, 1322, 1323, 1324, 1325, 1326, 1327, 1328, 1329, 1330,  
1331, 1332, 1333, 1334, 1335, 1336, 1337, 1338, 1339, 1340,  
1341, 1342, 1343, 1344, 1345, 1346, 1347, 1348, 1349, 1350,  
1351, 1352, 1353, 1354, 1355, 1356, 1357, 1358, 1359, 1360,  
1361, 1362, 1363, 1364, 1365, 1366, 1367, 1368, 1369, 1370,  
1371, 1372, 1373, 1374, 1375, 1376, 1377, 1378, 1379, 1380,  
1381, 1382, 1383, 1384, 1385, 1386, 1387, 1388, 1389, 1390,  
1391, 1392, 1393, 1394, 1395, 1396, 1397, 1398, 1399, 1400,  
1401, 1402, 1403, 1404, 1405, 1406, 1407, 1408, 1409, 1410,  
1411, 1412, 1413, 1414, 1415, 1416, 1417, 1418, 1419, 1420,  
1421, 1422, 1423, 1424, 1425, 1426, 1427, 1428, 1429, 1430,  
1431, 1432, 1433, 1434, 1435, 1436, 1437, 1438, 1439, 1440,  
1441, 1442, 1443, 1444, 1445, 1446, 1447, 1448, 1449, 1450,  
1451, 1452, 1453, 1454, 1455, 1456, 1457, 1458, 1459, 1460,  
1461, 1462, 1463, 1464, 1465, 1466, 1467, 1468, 1469, 1470,  
1471, 1472, 1473, 1474, 1475, 1476, 1477, 1478, 1479, 1480,  
1481, 1482, 1483, 1484, 1485, 1486, 1487, 1488, 1489, 1490,  
1491, 1492, 1493, 1494, 1495, 1496, 1497, 1498, 1499, 1500,  
1501, 1502, 1503, 1504, 1505, 1506, 1507, 1508, 1509, 1510,  
1511, 1512, 1513, 1514, 1515, 1516, 1517, 1518, 1519, 1520,  
1521, 1522, 1523, 1524, 1525, 1526, 1527, 1528, 1529, 1530,  
1531, 1532, 1533, 1534, 1535, 1536, 1537, 1538, 1539, 1540,  
1541, 1542, 1543, 1544, 1545, 1546, 1547, 1548, 1549, 1550,  
1551, 1552, 1553, 1554, 1555, 1556, 1557, 1558, 1559, 1560,  
1561, 1562, 1563, 1564, 1565, 1566, 1567, 1568, 1569, 1570,  
1571, 1572, 1573, 1574, 1575, 1576, 1577, 1578, 1579, 1580,  
1581, 1582, 1583, 1584, 1585, 1586, 1587, 1588, 1589, 1590,  
1591, 1592, 1593, 1594, 1595, 1596, 1597, 1598, 1599, 1600,  
1601, 1602, 1603, 1604, 1605, 1606, 1607, 1608, 1609, 1610,  
1611, 1612, 1613, 1614, 1615, 1616, 1617, 1618, 1619, 1620,  
1621, 1622, 1623, 1624, 1625, 1626, 1627, 1628, 1629, 1630,  
1631, 1632, 1633, 1634, 1635, 1636, 1637, 1638, 1639, 1640,  
1641, 1642, 1643, 1644, 1645, 1646, 1647, 1648, 1649, 1650,

1651, 1652, 1653, 1654, 1655, 1656, 1657, 1658, 1659, 1660,  
1661, 1662, 1663, 1664, 1665, 1666, 1667, 1668, 1669, 1670,  
1671, 1672, 1673, 1674, 1675, 1676, 1677, 1678, 1679, 1680,  
1681, 1682, 1683, 1684, 1685, 1686, 1687, 1688, 1689, 1690,  
1691, 1692, 1693, 1694, 1695, 1696, 1697, 1698, 1699, 1700,  
1701, 1702, 1703, 1704, 1705, 1706, 1707, 1708, 1709, 1710,  
1711, 1712, 1713, 1714, 1715, 1716, 1717, 1718, 1719, 1720,  
1721, 1722, 1723, 1724, 1725, 1726, 1727, 1728, 1729, 1730,  
1731, 1732, 1733, 1734, 1735, 1736, 1737, 1738, 1739, 1740,  
1741, 1742, 1743, 1744, 1745, 1746, 1747, 1748, 1749, 1750,  
1751, 1752, 1753, 1754, 1755, 1756, 1757, 1758, 1759, 1760,  
1761, 1762, 1763, 1764, 1765, 1766, 1767, 1768, 1769, 1770,  
1771, 1772, 1773, 1774, 1775, 1776, 1777, 1778, 1779, 1780,  
1781, 1782, 1783, 1784, 1785, 1786, 1787, 1788, 1789, 1790,  
1791, 1792, 1793, 1794, 1795, 1796, 1797, 1798, 1799, 1800,  
1801, 1802, 1803, 1804, 1805, 1806, 1807, 1808, 1809, 1810,  
1811, 1812, 1813, 1814, 1815, 1816, 1817, 1818, 1819, 1820,  
1821, 1822, 1823, 1824, 1825, 1826, 1827, 1828, 1829, 1830,  
1831, 1832, 1833, 1834, 1835, 1836, 1837, 1838, 1839, 1840,  
1841, 1842, 1843, 1844, 1845, 1846, 1847, 1848, 1849, 1850,  
1851, 1852, 1853, 1854, 1855, 1856, 1857, 1858, 1859, 1860,  
1861, 1862, 1863, 1864, 1865, 1866, 1867, 1868, 1869, 1870,  
1871, 1872, 1873, 1874, 1875, 1876, 1877, 1878, 1879, 1880,  
1881, 1882, 1883, 1884, 1885, 1886, 1887, 1888, 1889, 1890,  
1891, 1892, 1893, 1894, 1895, 1896, 1897, 1898, 1899, 1900,  
1901, 1902, 1903, 1904, 1905, 1906, 1907, 1908, 1909, 1910,  
1911, 1912, 1913, 1914, 1915, 1916, 1917, 1918, 1919, 1920,  
1921, 1922, 1923, 1924, 1925, 1926, 1927, 1928, 1929, 1930,  
1931, 1932, 1933, 1934, 1935, 1936, 1937, 1938, 1939, 1940,  
1941, 1942, 1943, 1944, 1945, 1946, 1947, 1948, 1949, 1950,  
1951, 1952, 1953, 1954, 1955, 1956, 1957, 1958, 1959, 1960,  
1961, 1962, 1963, 1964, 1965, 1966, 1967, 1975, 1976, 1977,  
1978, 1979, 1980, 1981, 1982, 1983, 1984, 1985, 1986, 1987,  
1988, 1989, 1990, 1991, 1992, 1993, 1994, 1995, 1996, 1997,  
1998, 1999, 2000, 2001, 2002, 2003, 2004, 2005, 2006, 2007,  
2008, 2009, 2010, 2011, 2012, 2013, 2014, 2015, 2016, 2017,  
2018, 2019, 2020, 2021, 2022, 2023, 2024, 2025, 2026, 2027,  
2028, 2029, 2030, 2031, 2032, 2033, 2034, 2035, 2036, 2037,  
2038, 2039, 2040, 2041, 2042, 2043, 2044, 2045, 2046, 2047,  
2048, 2049, 2050, 2051, 2052, 2053, 2054, 2055, 2056, 2057,  
2058, 2059, 2060, 2061, 2062, 2063, 2064, 2065, 2066, 2067,  
2068, 2069, 2070, 2071, 2072, 2073, 2074, 2075, 2076, 2077,  
2078, 2079, 2080, 2081, 2082, 2083, 2084, 2085, 2086, 2087,  
2088, 2089, 2090, 2091, 2092, 2093, 2094, 2095, 2096, 2097,  
2098, 2099, 2100, 2101, 2102, 2103, 2104, 2105, 2106, 2107,  
2108, 2109, 2110, 2111, 2112, 2113, 2114, 2115, 2116, 2117,

2118, 2119, 2120, 2121, 2122, 2123, 2124, 2125, 2126, 2127,  
2128, 2129, 2130, 2131, 2132, 2133, 2134, 2135, 2136, 2137,  
2138, 2139, 2140, 2141, 2142, 2143, 2144, 2145, 2146, 2147,  
2148, 2149, 2150, 2151, 2152, 2153, 2154, 2155, 2156, 2157,  
2158, 2159, 2160, 2161, 2162, 2163, 2164, 2165, 2166, 2167,  
2168, 2169, 2170, 2171, 2172, 2173, 2174, 2175, 2176, 2177,  
2178, 2179, 2180, 2181, 2182, 2183, 2184, 2185, 2186, 2187,  
2188, 2189, 2190, 2191, 2192, 2193, 2194, 2195, 2196, 2197,  
2198, 2199, 2200, 2201, 2202, 2203, 2204, 2205, 2206, 2207,  
2208, 2209, 2210, 2211, 2212, 2213, 2214, 2215, 2216, 2217,  
2218, 2219, 2220, 2221, 2222, 2223, 2224, 2225, 2226, 2227,  
2228, 2229, 2230, 2231, 2232, 2233, 2234, 2235, 2236, 2237,  
2238, 2239, 2240, 2241, 2242, 2243, 2244, 2245, 2246, 2247,  
2248, 2249, 2250, 2251, 2252, 2253, 2254, 2255, 2256, 2257,  
2258, 2259, 2260, 2261, 2262, 2263, 2264, 2265, 2266, 2267,  
2268, 2269, 2270, 2271, 2272, 2273, 2274, 2275, 2276, 2277,  
2278, 2279, 3000, 3001, 3002, 3003, 3004, 3005, 3006, 3007,  
3008, 3009, 3010, 3011, 3012, 3013, 3014, 3015, 3016, 3017,  
3018, 3019, 3020, 3021, 3022, 3023, 3024, 3025, 3026, 3027,  
3028, 3029, 3030, 3031, 3032, 3033, 3034, 3035, 3036, 3037,  
3038, 3039, 3040, 3041, 3042, 3043, 3044, 3045, 3046, 3047,  
3048, 3049, 3050, 3051, 3052, 3053, 3054, 3055, 3056, 3057,  
3058, 3059, 3060, 3061, 3062, 3063, 3064, 3065, 3066, 3067,  
3068, 3069, 3070, 3071, 3072, 3073, 3074, 3075, 3076, 3077,  
3078, 3079, 3080, 3081, 3082, 3083, 3084, 3085, 3100, 3102,  
3103, 3115, 3116, 3117, 3132, 3143, 3322, 3323, 3324, 3325,  
3326, 3327, 3328, 3329, 3330, 3331, 3332, 3333, 3334, 3335,  
3336, 3337, 3338, 3340, 3341, 3344, 3349, 3352, 3353

(11) In Washoe County, in census tract 35.03, blocks 1018,  
1019, 1020, 1021, 1026, 1029, 1030, 1031, 1032, 1033, 1034,  
1035, 1036, 1037, 1038, 1039, 1040, 1041, 1042, 1045, 1046,  
1047, 1048, 1049 and 1051

(12) In Washoe County, in census tract 35.04, blocks 3000  
and 3022

(13) In Washoe County, in census tract 35.15, blocks 2000,  
2007, 2008, 2009, 4000, 4001, 4002, 4003, 4009, 4010, 4015,  
4016, 4037, 4038, 4039, 4040, 4041, 4042, 4043, 4044, 4045,  
4046, 4047, 4048, 4049, 4050, 4051, 4052, 4056, 4057, 4058,  
4059, 4064, 4067

(14) In Washoe County, in census tract 9402, blocks 1000,  
1001, 1002, 1003, 1004, 1005, 1006, 1007, 1008, 1009, 1010,  
1011, 1012, 1013, 1014, 1015, 1016, 1017, 1018, 1019, 1020,  
1021, 1022, 1023, 1024, 1025, 1026, 1027, 1028, 1029, 1030,  
1031, 1032, 1033, 1034, 1035, 1036, 1037, 1038, 1039, 1040,  
1041, 1042, 1043, 1044, 1045, 1046, 1047, 1048, 1049, 1050,  
1051, 1052, 1053, 1054, 1055, 1056, 1057, 1058, 1059, 1060,

1061, 1062, 1063, 1064, 1065, 1066, 1067, 1068, 1069, 1070,  
1071, 1072, 1073, 1074, 1075, 1076, 1077, 1078, 1079, 1080,  
1081, 1082, 1083, 1084, 1085, 1086, 1087, 1088, 1089, 1090,  
1091, 1092, 1093, 1094, 1095, 1096, 1097, 1098, 1099, 1100,  
1101, 1102, 1103, 1104, 1105, 1106, 1107, 1108, 1109, 1110,  
1111, 1112, 1113, 1114, 1115, 1116, 1117, 1118, 1119, 1120,  
1121, 1122, 1123, 1124, 1125, 1126, 1127, 1128, 1129, 1130,  
1131, 1132, 1133, 1134, 1135, 1136, 1137, 1138, 1139, 1140,  
1141, 1142, 1143, 1144, 1145, 1146, 1147, 1148, 1149, 1150,  
1151, 1152, 1153, 1154, 1155, 1156, 1157, 1158, 1159, 1160,  
1161, 1162, 1163, 1164, 1165, 1166, 1167, 1168, 1169, 1170,  
1171, 1172, 1173, 1174, 1175, 1176, 1177, 1178, 1179, 1180,  
1181, 1182, 1183, 1184, 1185, 1186, 1187, 1188, 1189, 1190,  
1191, 1192, 1193, 1194, 1195, 1196, 1197, 1198, 1199, 1200,  
1201, 1202, 1203, 1204, 1205, 1206, 1207, 1208, 1209, 1210,  
1211, 1212, 1213, 1214, 1215, 1216, 1217, 1218, 1219, 1220,  
1221, 1249, 1250, 1251, 1252, 1410, 1411, 1412, 1418, 1420,  
1421, 1422, 1423, 1424, 1425, 1426, 1427, 1428 and 1429

(15) In Washoe County, in census tract 9802, blocks 1006,  
1007, 1008, 1009, 1010, 1011, 1012, 1013, 1014, 1015, 1016,  
1017, 1018, 1019, 1020 and 1021.

3. At the general election in 1976 and every 4 years thereafter, there shall be elected one county commissioner from county commissioner district No. 1 and one county commissioner from county commissioner district No. 4, for terms of 4 years.

4. At the general election in 1978 and every 4 years thereafter, there shall be elected one county commissioner from county commissioner district No. 2, one county commissioner from county commissioner district No. 3 and one county commissioner from county commissioner district No. 5, for terms of 4 years.

5. The county commissioner districts set forth in Ordinance No. 1132, adopted on October 9, 2001 are effective until 11:59 p.m. on December 31, 2011. On January 1, 2012, beginning at 12:00 a.m., and in compliance with NRS 244.014, the five county commissioner districts in Washoe County are re-created as set forth in subsection 1 above.

6. The members of the board of county commissioners of Washoe County as constituted on December 31, 2011, shall, pursuant to law, continue to hold office for the terms for which they were elected or appointed and as of January 1, 2012, shall represent the following county commissioner districts as such districts are established in accordance with subsection 1 above:

(a) Commissioner John Breternitz shall be the commissioner representing county commissioner district No. 1.

(b) Commissioner David Humke shall be the commissioner representing county commissioner district No. 2.

- (c) Commissioner Kitty Jung shall be the commissioner representing county commissioner district No. 3.
- (d) Commissioner Robert Larkin shall be the commissioner representing county commissioner district No. 4.
- (e) Commissioner Bonnie Weber shall be the commissioner representing county commissioner district No. 5.

7. If a vacancy occurs in the office of any county commissioner before the expiration of the term of that county commissioner, the vacancy shall be filled according to law by appointment of a qualified elector from the county commissioner district which that county commissioner represented in accordance with either subsection 1 or subsection 6 as of the date the appointment is made.

8. A map showing the new county commissioner districts which take effect January 1, 2012, as set forth in subsection 6 above, is set forth below. The map is intended to illustrate the new districts. In the event of a conflict between the map and the descriptions of the districts as contained in this ordinance, the descriptions and not the map shall control.

SECTION 4. If any section of this ordinance or portion thereof is for any reason held invalid or unconstitutional by any court of competent jurisdiction, such holding shall not invalidate the remaining parts of this ordinance.

SECTION 5. All ordinances, parts of ordinances, chapters, sections, subsections, clauses, phrases, or sentences contained in the Washoe County Code in conflict herewith are hereby repealed.

SECTION 6. This ordinance shall be published by title only, together with the names of the County Commissioners voting for or against its passage, in a newspaper published in and having a general circulation in Washoe County, Nevada, at least once a week for a period of two (2) weeks, and shall be in force and effect as provided for herein.

[end of page]

SECTION 7. This ordinance is effective on January 1, 2012 and as more specifically provided for herein.

[Business Impact Note: The Board of County Commissioners hereby finds that this ordinance does not impose a direct and significant economic burden upon a business, nor does it directly restrict the formation, operation or expansion of a business.]

Proposed on the 8<sup>th</sup> day of November, 2011.  
Proposed by Commissioner Weber.  
Passed on the 13<sup>th</sup> day of December, 2011.

Vote:


Ayes:

Nays:

Absent:



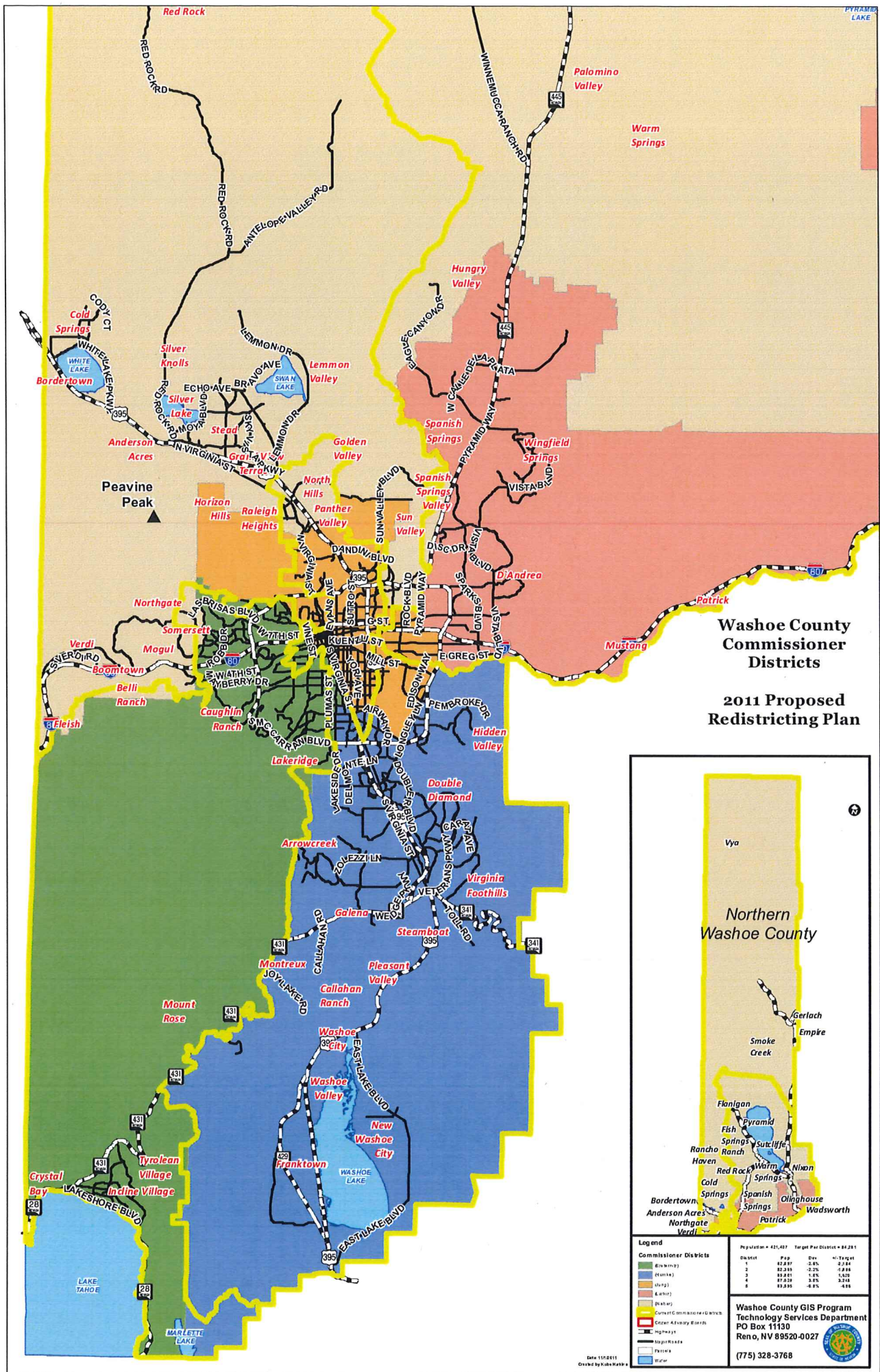
\_\_\_\_\_  
John Breternitz, Chairman  
Washoe County Commission



ATTEST:  
Mary Harvey  
County Clerk

This ordinance shall be in force and effect from and after publication and as of the date ordered by the Board of County Commissioners.





**Washoe County  
Commissioner  
Districts**  
  
**2011 Proposed  
Redistricting Plan**

**Legend**

- Commissioner Districts
  - 1 (Green)
  - 2 (Orange)
  - 3 (Yellow)
  - 4 (Red)
  - 5 (Blue)
  - 6 (Purple)
- Current Commissioner Districts
- Citizen Advisory Boards
- Highways
- Water

District	Pop.	Dev.	% Target
1	82,897	2.5%	2,284
2	82,200	2.2%	-2,186
3	85,801	1.5%	1,325
4	87,230	2.2%	2,216
5	83,835	-0.5%	-408

Washoe County GIS Program  
Technology Services Department  
PO Box 11130  
Reno, NV 89520-0027  
(775) 328-3768

1477

WASHOE COUNTY  
COMPTROLLER

**RENO NEWSPAPERS INC**

**Publishers of**

**Reno Gazette-Journal**

955 Kuenzli St • P.O. Box 22,000 • Reno, NV 89520 • 775.788.6200

Legal Advertising Office 775.788.6394

2012 JAN -3 AM 10:32

WASHOE CO  
PO BOX 11130  
RENO NV 89520-0027

Customer Acct# 349008  
PO# *old 1477*  
Ad# 1000769981  
Legal Ad Cost \$ *180.02*

STATE OF NEVADA  
COUNTY OF WASHOE

Being first duly sworn, deposes and says: That as the legal clerk of the Reno Gazette-Journal, a daily newspaper of general circulation published in Reno, Washoe County, State of Nevada, that the notice referenced below has published in each regular and entire issue of said newspaper between the dates: **12/24/2011 - 12/30/2011**, for exact publication dates please see last line of Proof of Publication below.

Subscribed and sworn to before me

Signed: *Gina Briles*

Gina Briles

DEC 30 2011



*Tana Ciccotti*

**Proof of Publication**

AMENDED NOTICE OF ADOPTION WASHOE COUNTY ORDINANCE NO.1477 BILL NO. 1658 An Ordinance amending Chapter 5 of the Washoe County Code relating to county commissioner election districts by establishing five county commissioner election districts that are as equal in population as practicable and providing other matters properly related thereto. (Bill No. 1658) NOTICE IS HEREBY GIVEN that typewritten copies of the above-numbered and entitled ordinance are available for inspection by the interested parties at the office of the County Clerk of Washoe County, Nevada, at her office in the Washoe County Courthouse, 75 Court Street, Reno, Washoe County, Nevada; and that the ordinance was proposed on November 8, 2011 and was passed and adopted without amendment at a regular meeting held on December 13, 2011 by the following vote of the Board of County Commissioners: Those Voting Aye: John Breternitz David Humke Kitty Jung Bonnie Weber Robert Larkin Those Voting Nay: None Those Absent: None This ordinance shall be in full force and effect from and after the date of January 1, 2012. IN WITNESS WHEREOF, the Board of County Commissioners of Washoe County, Nevada, has caused this ordinance to be published by title only. DATED: December 21, 2011. AMY HARVEY, Washoe County Clerk and Clerk of the Board of County Commissioners No. 769981 Dec, 24, 30, 2011

*1477*

RENO NEWSPAPERS INC

Publishers of

RENO GAZETTE-JOURNAL

955 Kuenzli St. P.O.Box 22000 RENO, NV 89520 PHONE: (775) 788-6200

Legal Advertising Office (775) 788-6394

WASHOE COUNTY  
COMPTROLLER

2012 FEB -2 AM 10: 07

Customer Account # 349008

PO# /ID#

Ad Cost \$100.75

- Washoe County
- V. Winn
- Po Box 11130
- Reno, NV 89520

STATE OF NEVADA  
COUNTY OF WASHOE

s/s Gina Briles

Being first duly sworn, deposes and says:  
That as the legal clerk of the RENO  
GAZETTE-JOURNAL, a daily newspaper  
published in Reno, Washoe County,  
State of Nevada, that the notice:

of adoption

has published in each regular and entire  
issue of said newspaper on the following  
dates to wit:

Dec. 17, 2011

Signed: *[Signature]*

Date: 2-1-12

*[Signature]*  
Notary Public

PROOF OF PUBLICATION

NOTICE OF ADOPTION  
WASHOE COUNTY ORDINANCE NO.1477  
BILL NO. 1658

An Ordinance amending Chapter 5 of the Washoe County Code relating to county commissioner election districts by establishing five county commissioner election districts that are as equal in population as practicable and providing other matters properly related thereto. (Bill No. 16-58)

NOTICE IS HEREBY GIVEN that typewritten copies of the above-numbered and entitled ordinance are available for inspection by the interested parties at the office of the County Clerk of Washoe County, Nevada, at her office in the Washoe County Courthouse, 75 Court Street, Reno, Washoe County, Nevada; and that the ordinance was proposed on November 8, 2011 and was passed and adopted without amendment at a regular meeting held on December 13, 2011 by the following vote of the Board of County Commissioners

Those Voting Aye:  
John Breternit  
David Humke  
Kitty Jung  
Bonnie Weber  
Robert Larkin  
Those Voting Nay: None  
Those Absent: None

This ordinance shall be in full force and effect from and after the date of the second publication of such ordinance by its title only on December 23, 2011.

IN WITNESS WHEREOF, the Board of County Commissioners of Washoe County, Nevada, has caused this ordinance to be published by title only.

DATED: December 14, 2011.

AMY HARVEY, Washoe County Clerk and  
Clerk of the Board of County Commissioners

No. 769575 Dec. 17, 23, 2011



1477