

Notice: Per NRS 239B.030, this document does not contain personal information as defined in NRS 603A.040

SUMMARY: An ordinance modifying the boundaries of county commission districts based on decennial census.

BILL NO. 1869

ORDINANCE NO. 1681

AN ORDINANCE AMENDING CHAPTER 5 OF THE WASHOE COUNTY CODE RELATING TO COUNTY COMMISSIONER ELECTION DISTRICTS BY ESTABLISHING FIVE COUNTY COMMISSIONER ELECTION DISTRICTS THAT ARE AS EQUAL IN POPULATION AS PRACTICABLE AND PROVIDING OTHER MATTERS PROPERLY RELATED THERETO.

THE BOARD OF COUNTY COMMISSIONERS OF THE COUNTY OF WASHOE DO ORDAIN:

SECTION 1. Chapter 5 of the Washoe County Code (Administration and Personnel) is hereby amended by amending Section 5.015 (County commissioner districts: Creation; election of county commissioners; filling of vacancy) to read as set forth in section 3 of this ordinance.

SECTION 2. It is the purpose of this ordinance to comply with the provisions of NRS 244.018 and the Nevada and United States Constitution by re-establishing five county commissioner election districts that are nearly equal in population as practicable using date from the most recent United States census.

SECTION 3.

5.015 - County commissioner districts: Creation; election of county commissioners; filling of vacancy.

1. As used in subsection 2, "Block" and "Blocks" mean the smallest geographical unit whose boundaries were designated by the Bureau of the Census of the United States Department of Commerce in the 2020 pre-census version of its topographically integrated geographic encoding and referencing system.
2. In compliance with chapter 244 of NRS and in reliance upon the most recent decennial census data five county commissioner districts in Washoe County are re-created as follows:
 - (a) County commissioner district No. 1 is composed of:
 - (1) In Washoe County, all of census tracts 33.06, 10.14, 33.07, 24.11, 24.06, 9900, 33.11, 4.01, 4.02, 10.15, 33.08, 9803, 2.01, 33.05, 10.16, 24.14, 24.13, 10.17, 12.03, 10.19, 10.18, 12.04, 3.01, 3.02, 12.01, 11.04, 11.05, 11.03, 10.05, 11.01, and 13.
 - (2) In Washoe County, census tract 104, blocks 1000, 1001, 1002, 1003, 1004, 1005, 1006, 1007, 1008, 1009, 1010, 1011, 1012, 1013, 1014, 1015, 1016, 1017, 2007, 2008, 3000, 3001, 3002, 3003, 3004, 3005, 3006, 3007, 3008, 3009, 3010, 3011, 3012, 3013, 3014, 3015, 3016, 3017, 3018, and 3019.

- (3) In Washoe County, in census tract 202, blocks 2000, 2001, 2002, 2003, 2004, 2005, 2006, 2007, 2008, 2009, 2010, 2011, 2012, 2013, 2014, 2015, 2016, 2017, 2018, 2019, 3000, 3001, 3002, 3003, 3004, 3005, 3006, 3007, 3008, 3009, 3010, 3011, 3012, 3013, 3014, 3015, 3016, 3017, 3018, 3019, 3020, 3021, 3022, and 3023.
- (4) In Washoe County, in census tract 701, blocks 2000, 2001, 2002, 2003, 2004, 2005, 2006, 2007, 2008, 2009, 2010, 2011, 2012, 2013, 2014, 2015, 2016, 2017, 2018, 2019, 2020, 2021, 2022, 2023, 2024, and 2025.
- (5) In Washoe County, in census tract 702, blocks 1008, 1009, 3002, 3003, 3004, 3014, 3015, 3016, and 3017.
- (6) In Washoe County, in census tract 900, blocks 2000, 2001, 2002, 2003, 2004, 2005, 2006, 2007, 2008, 2009, 3002, 3003, 3004, 3005, 3009, 3010, and 3011.
- (7) In Washoe County, in census tract 1013, blocks 3000, 3001, 3002, 3003, 3004, 3005, 3006, 3007, 3009, 3010, 3011, 3012, 3013, and 3018.
- (8) In Washoe County, in census tract 2211, block 1003.
- (9) In Washoe County, in census tract 2302, blocks 1000, 1001, 1002, 1003, 1004, 1005, 1006, 1007, 1008, 1009, 1010, 1011, 1012, 1013, 1014, 1015, 1016, 1017, 1018, 1019, 1020, 1021, 1022, 1023, 1024, 1025, 1026, 1027, 1028, 1029, 1030, 1031, 1032, 1033, 1034, 1035, 1036, 1037, 1038, 1039, 1040, 1041, 1042, 1043, 1044, 1045, 1046, 1047, 1048, 1049, 1050, 1051, 1052, 1053, 1054, 1055, 1056, 1057, 1058, 1059, 1060, 1061, 1062, 1063, 2003, 2004, 2005, 2006, 2007, 2008, 2009, 2010, 2011, 2012, 2013, 2014, 2015, 2016, 2017, 2018, 2019, 2020, 2021, 2022, 2023, 2024, 2025, 2026, 2027, 2028, 2029, 2030, 2031, 2032, 2033, 2034, 2035, 2036, 2037, 2038, 2039, 2040, 2041, 2042, 2043, 3000, 3001, 3002, 3003, 3004, 3005, 3006, 3007, 3008, 3009, 3010, 3011, 3012, 3013, 3014, 3015, 3016, 3017, 3018, 3019, 3020, 3021, 3022, 3023, 3024, 3025, 3026, 3027, 3028, 3029, 3030, 3031, 3032, 3033, 3034, 3035, 3036, 3037, 3038, 3039, 3040, 3041, 3042, 3043, 3044, 3045, 3046, 3047, 3048, 3049, 3050, 3051, 3052, 3053, 3054, 3055, 3056, 3057, 3058, 3059, 3060, 3061, 3062, 3063, 3064, 3065, 3066, 3067, 3068, 3069, 3070, 3071, 3072, 3073, 3074, 3075, 3076, 3077, 3078, 3079, 3080, 3081, 3082, 3083, 3084, 3085, 3086, 3087, 3088, 3089, 3090, 3091, 3092, 3093, 3094, 3095, 3096, 3097, 3098, 3099, 3100, 3101, 3102, 3103, and 3104.
- (10) In Washoe County, in census tract 2303, block 3014.
- (11) In Washoe County, in census tract 2304, block 1014.
- (12) In Washoe County, in census tract 2401, blocks 2000, 2001, 2002, 2003, 2004, 2005, 2006, 2007, 2008, 2009, 2010, 2011, 2012, 2013, 2014, 2015, 2016, 2017, 2018, 2019, 2020, 2021, and 2022.
- (13) In Washoe County, in census tract 2500, blocks 1018, 1019, 1020, 1021, 1022, 1023, 1024, 1025, and 1026
- (14) In Washoe County, in census tract 3206, blocks 1001, 1002, 1004, 1021, 1028, 1031, 1079, and 1089
- (15) In Washoe County, in census tract 3310, blocks 1000, 1001, 1002, 1003, 1004, 1005, 1006, 1007, 1008, 1009, 1010, 1011, 1012, 1013, 1014, 1015, 1016, 1017, 1018, 1019, 1020, 1021, 1022, 1023, 2000, 2001, 2002, 2003, 2004, 2005, 2006, 2007, 2008, 2009, 2010, 2011, 2012, 2013, 2014,

2015, 2016, 2017, 2018, 2019, 2020, 2021, 2022, 2023, 2024, 2028, and 2029.

(b) County commissioner district No. 2 is composed of:

- (1) In Washoe County, census all of census tracts 22.12, 22.10, 10.11, 22.07, 21.06, 22.04, 32.07, 22.16, 22.15, 32.05, 22.17, 22.19, 22.13, 10.12, 32.03, 22.08, 10.10, and 22.18.
- (2) In Washoe County, in census tract 900, blocks 1000, 1001, 1002, 1003, 1004, 1005, 3000, 3001, 3006, 3007, and 3008.
- (3) In Washoe County, in census tract 1013, blocks 1000, 1001, 1002, 1003, 1004, 1005, 1006, 1007, 1008, 1009, 1010, 1011, 1012, 1013, 1014, 1015, 1016, 1017, 1018, 1019, 1020, 1021, 1022, 1023, 1024, 1025, 1026, 1027, 1028, 1029, 1030, 1031, 1032, 1033, 1034, 1035, 1036, 1037, 1038, 1039, 1040, 1041, 1042, 1043, 1044, 1045, 1046, 1047, 2000, 2001, 2002, 2003, 2004, 2005, 2006, 2007, 2008, 2009, 2010, 2011, 2012, 2013, 2014, 2015, 2016, 2017, 2018, 2019, 2020, 2021, 2022, 2023, 2024, 2025, 3008, 3014, 3015, 3016, 3017, 3019, 3020, 3021, 3022, 3023, 3024, 3025, 3026, 3027, 3028, 3029, 3030, 3031, 4000, 4001, 4002, 4003, 4004, 4005, 4006, 4007, 4008, 4009, 4010, 4011, 4012, 4013, 4014, 4015, 4016, 4017, 4018, 4019, 4020, 4021, 4022, and 4023.
- (4) In Washoe County, in census tract 2103, blocks 1015, 1016, 1017, 1018, 1019, 2011, 2012, 2013, 2014, 2015, 2016, 2017, 2018, 2019, 2020, 2028, and 2029.
- (5) In Washoe County, in census tract 2104, blocks 1006, 1007, 1011, 2000, 2001, 2002, 2003, 2004, 2005, 2006, 2007, 2008, 2009, 2010, 2011, 2012, 2013, 3000, 3001, 3002, 3003, 3004, 3005, 3006, 3007, 3008, 3009, 3010, 3011, 3012, 3013, 3014, 3015, 3016, 3017, 3018, 3019, and 3020.
- (6) In Washoe County, in census tract 2105, blocks 1000, 1001, 1002, 1003, 1004, 1005, 1006, 1007, 1008, 1009, 1010, 2000, 2001, 3001, 3002, 3003, 3004, 3005, 3006, 3007, 3008, 4000, 4001, 4002, 4003, and 4004.
- (7) In Washoe County, in census tract 2211, blocks 1000, 1001, 1002, 1004, 1005, 1006, 1007, 1008, 1009, 1010, 1011, 1012, 2000, 2001, 2002, 2003, 2004, 2005, 2006, 2007, 2008, 2009, 2010, 2011, 2012, 2013, 2014, 2015, and 2016.
- (8) In Washoe County, in census tract 2214, blocks 1001, 1002, 1003, 1004, 1005, 1006, 1007, 1008, 1009, 1010, 1011, 1012, 1013, and 2000.
- (9) In Washoe County, in census tract 3206, blocks 1000, 1003, 1005, 1006, 1007, 1008, 1009, 1010, 1011, 1012, 1013, 1014, 1015, 1016, 1017, 1018, 1019, 1020, 1022, 1023, 1024, 1025, 1026, 1027, 1029, 1030, 1032, 1033, 1034, 1035, 1036, 1037, 1038, 1039, 1040, 1041, 1042, 1043, 1044, 1045, 1046, 1047, 1048, 1049, 1050, 1051, 1052, 1053, 1054, 1055, 1056, 1057, 1058, 1059, 1060, 1061, 1062, 1063, 1064, 1065, 1066, 1067, 1068, 1069, 1070, 1071, 1072, 1073, 1074, 1075, 1076, 1077, 1078, 1080, 1081, 1082, 1083, 1084, 1085, 1086, 1087, and 1088.
- (10) In Washoe County, in census tract 3310, blocks 2025, 2026, and 2027.
- (11) In Washoe County, in census tract 980000, blocks 1005, 1006, 1007, 1008, 1009, 1010, 1011, 1012, 1013, 1014, 1015, 1016, 1017, 1018, 1019,

1020, 1021, 1022, 1023, 1024, 1025, 1026, 1027, 1028, 1029, 1030, 1031, 1032, 1033, 1034, 1036, 1037, 1038, 1039, 1040, 1041, 1042, 1043, 1044, 1045, and 1046.

(c) County commissioner district No. 3 is composed of:

- (1) In Washoe County, all of census tracts 21.07, 18.02, 15.01, 18.01, 27.04, 27.03, 17.03, 29.02, 1.05, 1.06, 30.01, 19.04, 17.04, 1.03, 15.04, 15.03, 28.02, 17.01, 19.03, 30.02, 19.01, 28.01, and 14.
- (2) In Washoe County, in census tract 104, blocks 2000, 2001, 2002, 2003, 2004, 2005, and 2006.
- (3) In Washoe County, in census tract 202, blocks 1000, 1001, 1002, 1003, 1004, 1005, 1006, 1007, 1008, 1009, 1010, 1011, 1012, 1013, 1014, and 1015.
- (4) In Washoe County, in census tract 701, blocks 1000, 1001, 1002, 1003, 1004, 1005, 1006, 1007, 1008, 1009, 1010, 1011, 1012, 1013, 1014, 1015, 1016, 1017, 1018, 1019, 1020, 1021, 1022, and 1023.
- (5) In Washoe County, in census tract 702, blocks 1000, 1001, 1002, 1003, 1004, 1005, 1006, 1007, 1010, 1011, 1012, 1013, 2000, 2001, 2002, 2003, 2004, 2005, 2006, 2007, 2008, 2009, 2010, 3000, 3001, 3005, 3006, 3007, 3008, 3009, 3010, 3011, 3012, and 3013.
- (6) In Washoe County, in census tract 2500, blocks 1000, 1001, 1002, 1003, 1004, 1005, 1006, 1007, 1008, 1009, 1010, 1011, 1012, 1013, 1014, 1015, 1016, 1017, 2000, 2001, 2002, 2003, 2004, 2005, 2006, 2007, 2008, 2009, 2010, 2011, 2012, 2013, 2014, 2015, 2016, 2017, 2018, 2019, 2020, 2021, 2022, 2023, 2024, 2025, 2026, 2027, 2028, 2029, 2030, and 2031.
- (7) In Washoe County, in census tract 2622, block 1000.
- (8) In Washoe County, in census tract 2623, blocks 1008, 1012, 1013, 1023, and 1024.
- (9) In Washoe County, in census tract 2705, blocks 3000, 3001, 3002, 3003, 3004, 3005, 3006, 3007, 3008, 3009, 3010, 3011, 3015, 3016, 3017, 3018, 3019, 3020, and 3021.
- (10) In Washoe County, in census tract 2706, blocks 2000, 2001, 2003, 2004, 2005, 2006, 2007, 2008, 2009, 3008, 3009, 3010, 3011, 3012, 3013, 3014, 3015, and 3016.
- (11) In Washoe County, in census tract 2707, blocks 1001, 1003, 1004, 1005, 1006, 1007, 1008, 1009, 2000, 2001, 2002, 2003, 2004, 2005, 2006, 2007, 2008, 2009, 2010, 2011, 2012, 2013, 3000, 3001, 3002, 3003, 3004, 3005, 3006, 3007, 3008, 3009, 3010, 3011, and 3012.
- (12) In Washoe County, in census tract 3111, blocks 2004, 2005, 2006, 2007, 2008, 2009, 2010, 2011, 2012, 2013, 2014, 2015, 2016, 2017, 2018, 2019, 2020, 2021, 2022, 2023, 2024, 2025, 2026, 2027, 2028, 2029, 2030, 2031, 2032, 2033, 2034, 2035, 2036, 2037, 2038, 2039, 2040, 2041, 2042, 2043, 2044, 2045, 2046, 2047, 2070, 2071, 2072, 2073, 2077, 2078, 2079, 2080, 2081, 2082, 2083, 2084, 2087, 2088, 2089, 2090, and 2093.
- (13) In Washoe County, in census tract 980000, blocks 1000, 1001, 1002, 1003, 1004, and 1035.

(d) County commissioner district No. 4 is composed of:

- (1) In Washoe County, in all of census tracts 35.13, 35.14, 35.12, 35.11, 31.09, 31.10, 31.05, 31.06, 35.17, 35.21, 35.08, 31.08, 35.07, 29.01, 35.10, 35.18, 35.20, 31.12, and 35.22.
- (2) In Washoe County, in census tract 2103, blocks 1000, 1001, 1002, 1003, 1004, 1005, 1006, 1007, 1008, 1009, 1010, 1011, 1012, 1013, 1014, 1020, 2000, 2001, 2002, 2003, 2004, 2005, 2006, 2007, 2008, 2009, 2010, 2021, 2022, 2023, 2024, 2025, 2026, 2027, and 2030.
- (3) In Washoe County, in census tract 2104, blocks 1000, 1001, 1002, 1003, 1004, 1005, 1008, 1009, 1010, 1012, 1013, 1014, 1015, 1016, 1017, 1018, 1019, 1020, 1021, 1022, 3021, and 3022.
- (4) In Washoe County, in census tract 2105, block 3000.
- (5) In Washoe County, in census tract 2214, block 1000.
- (6) In Washoe County, in census tract 2705, blocks 1002 and 1003.
- (7) In Washoe County, in census tract 3111, blocks 1000, 1001, 1002, 1003, 1004, 1005, 1006, 1007, 1008, 1009, 1010, 1011, 1012, 1013, 1014, 1015, 1016, 1017, 1018, 1019, 1020, 1021, 1022, 1023, 1024, 2000, 2001, 2002, 2003, 2048, 2049, 2050, 2051, 2052, 2053, 2054, 2055, 2056, 2057, 2058, 2059, 2060, 2061, 2062, 2063, 2064, 2065, 2066, 2067, 2068, 2069, 2074, 2075, 2076, 2085, 2086, 2091, 2092, and 2094.
- (8) In Washoe County, in census tract 3501, blocks 3057, 3060, 3074, 3075, 3076, 3079, 3080, 3081, 3082, 3083, 3087, 3088, 3096, 3103, 3104, 3105, 3106, 3107, 3108, 3109, 3115, 3116, 3117, 3118, 3119, 3120, 3121, 3122, 3125, 3126, 3127, 3128, 3132, 3133, 3134, 3150, 3151, 3152, 3153, 3164, 3165, 3166, 3170, 3175, 3180, 3181, 3182, 3183, 3184, 3185, 3186, 3187, 3188, 3190, 3191, 3192, and 3193.
- (9) In Washoe County, in census tract 3503, blocks 1000, 1001, 1002, 1003, 1004, 1005, 1006, 1008, 1009, 1010, 1011, 1012, 1013, 1019, 1020, 1021, 1022, 1023, 1024, 2002, 2003, 2004, 2005, 2006, 2007, 2008, 2009, 2010, 2011, 2012, 2013, 2014, 2015, 2016, 2017, 2018, 2019, 2020, 3000, 3001, 3002, 3003, 3004, 3005, 3006, 3007, 3008, 3009, 3010, and 3011.
- (10) In Washoe County, in census tract 3516, blocks 1001, 1002, 1003, 1004, 1008, 1009, 1010, 1011, 1012, 1013, 1014, 1015, 1016, 1017, 1018, 1019, 1020, 1021, 1022, 1023, 1024, 1025, 1026, 1027, 1028, 1029, 1030, 1031, 1032, 1033, 2001, 2004, 2005, 2006, 2007, 2008, 2009, 2010, 2012, 2013, 2014, 2017, 2018, 2019, 2020, 2021, 2026, 2027, 2028, 2029, 2030, 2031, 2032, 2033, 2034, 2035, 2036, 2037, 2038, 2039, 2040, 2043, 2044, 2045, 2046, 2049, 2052, 2053, 2054, 2056, and 2059.
- (11) In Washoe County, in census tract 3519, blocks 1000, 1001, 1002, 1003, 1004, 1005, 1006, 1007, 1008, 1009, 1010, 1011, 1012, 1013, 1014, 1015, 1016, 1017, 1018, 1019, 1020, 1021, 1022, 1023, 1024, 1025, 1026, 1027, 1028, 1029, 1030, 1031, 1032, 1033, 1034, 2001, 2002, 2003, 2005, 2006, 2007, 2008, 2009, 2011, 2013, 2014, 2015, 2016, 3000, 3001, 3002, 3003, 3004, 3005, 3006, 3007, 3008, 3009, 3010, 3011, 3012, 3015, 3016, 3017, 3018, 3019, 3020, and 3021.

(e) County commissioner district No. 5 is composed of:

- (1) In Washoe County, all of census tracts 9402, 9901, 26.18, 26.14, 26.11, 26.10, 26.16, 24.07, 24.08, 9802, 26.12, 24.12, 9801, 26.20, 24.09, 26.13, 26.15, 26.21, and 26.03.

- (2) In Washoe County, in census tract 2302, blocks 2000, 2001, and 2002.
- (3) In Washoe County, in census tract 2303, blocks 1000, 1001, 1002, 1003, 1004, 1005, 1006, 1007, 1008, 1009, 2000, 2001, 2002, 2003, 2004, 2005, 2006, 2007, 2008, 2009, 2010, 2011, 2012, 2013, 2014, 2015, 2016, 2017, 2018, 2019, 2020, 2021, 2022, 2023, 3000, 3001, 3002, 3003, 3004, 3005, 3006, 3007, 3008, 3009, 3010, 3011, 3012, 3013, 3015, and 3016.
- (4) In Washoe County, in census tract 2304, blocks 1000, 1001, 1002, 1003, 1004, 1005, 1006, 1007, 1008, 1009, 1010, 1011, 1012, 1013, 1015, 1016, 2000, 2001, 2002, 2003, 2004, 2005, 2006, 2007, 2008, 2009, 2010, 2011, 2012, 2013, 2014, 2015, 2016, 3000, 3001, 3002, 3003, 3004, 3005, 3006, 3007, 3008, 3009, 3010, 3011, 3012, 3013, 3014, 3015, 3016, 3017, 3018, 3019, 3020, 3021, 3022, 3023, 3024, 3025, 3026, 3027, 3028, 4000, 4001, 4002, 4003, 4004, 4005, 4006, 4007, 4008, 4009, 4010, 4011, 4012, and 4013.
- (5) In Washoe County, in census tract 2401, blocks 1000, 1001, 1002, 1003, 1004, 1005, 1006, 1007, 1008, 1009, 1010, 1011, 1012, 1013, 1014, 1015, 1016, 1017, 1018, 1019, and 1020.
- (6) In Washoe County, in census tract 2500, blocks 3000, 3001, 3002, 3003, 3004, 3005, 3006, 3007, 3008, and 3009.
- (7) In Washoe County, in census tract 2622, blocks 1001, 1002, 1003, 1004, 1005, 2000, 2001, 2002, 2003, 2004, 2005, 2006, 2007, 2008, 2009, 2010, 2011, 2012, 2013, 2014, 2015, 2016, 2017, 3000, 3001, 3002, 3003, 3004, 3005, 3006, 3007, 3008, 3009, 3010, 3011, 3012, 3013, 3014, and 3015.
- (8) In Washoe County, in census tract 2623, blocks 1000, 1001, 1002, 1003, 1004, 1005, 1006, 1007, 1009, 1010, 1011, 1014, 1015, 1016, 1017, 1018, 1019, 1020, 1021, 1022, 2000, 2001, 2002, 2003, 2004, 2005, 2006, 2007, 2008, 2009, 2010, 2011, 2012, 2013, 2014, 2015, 2016, 2017, 2018, 2019, 2020, 2021, 2022, 2023, 2024, 2025, 2026, 2027, and 2028.
- (9) In Washoe County, in census tract 2705, blocks 1000, 1001, 1004, 1005, 1006, 1007, 1008, 1009, 1010, 1011, 1012, 1013, 1014, 1015, 1016, 1017, 1018, 1019, 1020, 1021, 1022, 1023, 1024, 1025, 1026, 2000, 2001, 2002, 2003, 2004, 2005, 2006, 2007, 2008, 2009, 2010, 2011, 2012, 2013, 2014, 2015, 2016, 2017, 2018, 2019, 2020, 2021, 2022, 2023, 2024, 2025, 2026, 3012, 3013, and 3014.
- (10) In Washoe County, in census tract 2706, blocks 1000, 1001, 1002, 1003, 1004, 1005, 1006, 2002, 3000, 3001, 3002, 3003, 3004, 3005, 3006, and 3007.
- (11) In Washoe County, in census tract 2707, blocks 1001 and 1002.
- (12) In Washoe County, in census tract 3501, blocks 1000, 1001, 1002, 1003, 1004, 1005, 1006, 1007, 1008, 1009, 1010, 1011, 1012, 1013, 1014, 1015, 1016, 1017, 1018, 1019, 1020, 1021, 1022, 1023, 1024, 1025, 1026, 1027, 1028, 1029, 1030, 1031, 1032, 1033, 1034, 1035, 1036, 1037, 1038, 1039, 1040, 1041, 1042, 1043, 1044, 1045, 1046, 1047, 1048, 1049, 1050, 1051, 1052, 1053, 1054, 1055, 1056, 1057, 1058, 1059, 1060, 1061, 1062, 1063, 1064, 1065, 1066, 1067, 1068, 1069, 1070, 1071, 1072, 1073, 1074, 1075, 1076, 1077, 1078, 1079, 1080, 1081, 1082, 1083, 1084, 1085, 1086, 1087, 1088, 1089, 1090, 1091, 1092, 1093, 1094, 1095, 1096, 1097, 1098, 1099, 1100, 1101, 1102, 1103, 1104, 1105, 1106, 1107, 1108, 1109, 1110, 1111, 1112, 1113, 1114, 1115, 1116, 1117, 1118, 1119, 1120, 1121, 1122,

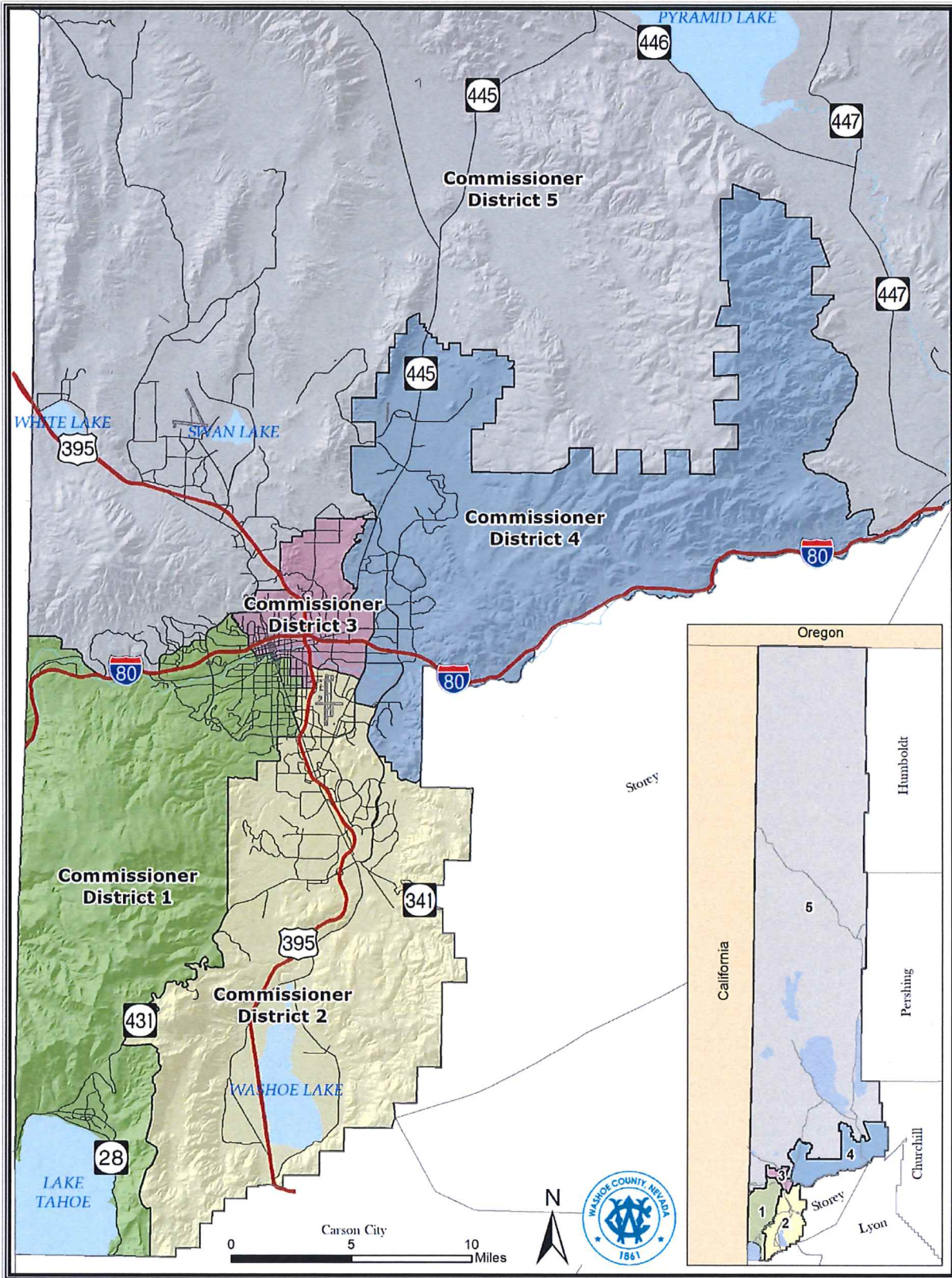
1123, 1124, 1125, 1126, 1127, 1128, 1129, 1130, 1131, 1132, 1133, 1134, 1135, 1136, 1137, 1138, 1139, 1140, 1141, 1142, 1143, 1144, 1145, 1146, 1147, 1148, 1149, 1150, 1151, 1152, 1153, 1154, 1155, 1156, 1157, 1158, 1159, 1160, 1161, 1162, 1163, 1164, 1165, 1166, 1167, 1168, 1169, 1170, 1171, 1172, 1173, 1174, 1175, 1176, 1177, 1178, 1179, 1180, 1181, 1182, 1183, 1184, 1185, 1186, 1187, 1188, 1189, 1190, 1191, 1192, 1193, 1194, 1195, 1196, 1197, 1198, 1199, 1200, 1201, 1202, 1203, 1204, 1205, 1206, 1207, 1208, 1209, 1210, 1211, 1212, 1213, 1214, 1215, 1216, 1217, 1218, 1219, 1220, 1221, 1222, 1223, 1224, 1225, 1226, 1227, 1228, 1229, 1230, 1231, 1232, 1233, 1234, 1235, 1236, 1237, 1238, 1239, 1240, 1241, 1242, 1243, 1244, 1245, 1246, 1247, 1248, 1249, 1250, 1251, 1252, 1253, 1254, 1255, 1256, 1257, 1258, 1259, 1260, 1261, 1262, 1263, 1264, 1265, 1266, 1267, 1268, 1269, 1270, 1271, 1272, 1273, 1274, 1275, 1276, 1277, 1278, 1279, 1280, 1281, 1282, 1283, 1284, 1285, 1286, 1287, 1288, 1289, 1290, 1291, 1292, 1293, 1294, 1295, 1296, 1297, 1298, 1299, 1300, 1301, 1302, 1303, 1304, 1305, 1306, 1307, 1308, 1309, 1310, 1311, 1312, 1313, 1314, 1315, 1316, 1317, 1318, 1319, 1320, 1321, 1322, 1323, 1324, 1325, 1326, 1327, 1328, 1329, 1330, 1331, 1332, 1333, 1334, 1335, 1336, 1337, 1338, 1339, 1340, 1341, 1342, 1343, 1344, 1345, 1346, 1347, 1348, 1349, 1350, 1351, 1352, 1353, 1354, 1355, 1356, 1357, 1358, 1359, 1360, 1361, 1362, 2000, 2001, 2002, 2003, 2004, 2005, 2006, 2007, 2008, 2009, 2010, 2011, 2012, 2013, 2014, 2015, 2016, 2017, 2018, 2019, 2020, 2021, 2022, 2023, 2024, 2025, 2026, 2027, 2028, 2029, 2030, 2031, 2032, 2033, 2034, 2035, 2036, 2037, 2038, 2039, 2040, 2041, 2042, 2043, 2044, 2045, 2046, 2047, 2048, 2049, 2050, 2051, 2052, 2053, 2054, 2055, 2056, 2057, 2058, 2059, 2060, 2061, 2062, 2063, 2064, 2065, 2066, 2067, 2068, 2069, 2070, 2071, 2072, 2073, 2074, 2075, 2076, 2077, 2078, 2079, 2080, 2081, 2082, 2083, 2084, 2085, 2086, 2087, 2088, 2089, 2090, 2091, 2092, 2093, 2094, 2095, 2096, 2097, 2098, 2099, 3000, 3001, 3002, 3003, 3004, 3005, 3006, 3007, 3008, 3009, 3010, 3011, 3012, 3013, 3014, 3015, 3016, 3017, 3018, 3019, 3020, 3021, 3022, 3023, 3024, 3025, 3026, 3027, 3028, 3029, 3030, 3031, 3032, 3033, 3034, 3035, 3036, 3037, 3038, 3039, 3040, 3041, 3042, 3043, 3044, 3045, 3046, 3047, 3048, 3049, 3050, 3051, 3052, 3053, 3054, 3055, 3056, 3058, 3059, 3061, 3062, 3063, 3064, 3065, 3066, 3067, 3068, 3069, 3070, 3071, 3072, 3073, 3077, 3078, 3084, 3085, 3086, 3089, 3090, 3091, 3092, 3093, 3094, 3095, 3097, 3098, 3099, 3100, 3101, 3102, 3110, 3111, 3112, 3113, 3114, 3123, 3124, 3129, 3130, 3131, 3135, 3136, 3137, 3138, 3139, 3140, 3141, 3142, 3143, 3144, 3145, 3146, 3147, 3148, 3149, 3154, 3155, 3156, 3157, 3158, 3159, 3160, 3161, 3162, 3163, 3167, 3168, 3169, 3171, 3172, 3173, 3174, 3176, 3177, 3178, 3179, and 3189.

(13) In Washoe County, in census tract 3503, blocks 1007, 1014, 1015, 1016, 1017, 1018, 1025, 1026, 1027, 1028, 2000, and 2001.

(14) In Washoe County, in census tract 3516, blocks 1000, 1005, 1006, 1007, 2000, 2002, 2003, 2011, 2015, 2016, 2022, 2023, 2024, 2025, 2041, 2042, 2047, 2048, 2050, 2051, 2055, 2057, and 2058.

(15) In Washoe county, in census tract 3519, blocks 2000, 2004, 2010, 2012, 3013, 3014.

3. At the general election in 1976 and every 4 years thereafter, there shall be elected one county commissioner from county commissioner district No. 1 and one county commissioner from county commissioner district No. 4, for terms of 4 years.
4. At the general election in 1978 and every 4 years thereafter, there shall be elected one county commissioner from county commissioner district No. 2, one county commissioner from county commissioner district No. 3 and one county commissioner from county commissioner district No. 5, for terms of 4 years.
5. The county commissioner districts set forth in Ordinance No. 1477, adopted on January 1, 2012, are effective until 11:59 p.m. on December 31, 2021. On January 1, 2022, beginning at 12:00 a.m., and in compliance with NRS 244.014, the five county commissioner districts in Washoe County are re-created as set forth in subsection 1 above.
6. The members of the board of county commissioners of Washoe County as constituted on December 31, 2021, shall, pursuant to law, continue to hold office for the terms for which they were elected or appointed and as of January 1, 2022, shall represent the following county commissioner districts as such districts are established in accordance with subsection 1 above:
 - (a) Commissioner Alexis Hill shall be the commissioner representing county commissioner district No. 1.
 - (b) Commissioner Bob Lucey shall be the commissioner representing county commissioner district No. 2.
 - (c) Commissioner Kitty Jung shall be the commissioner representing county commissioner district No. 3.
 - (d) Commissioner Vaughn Hartung shall be the commissioner representing county commissioner district No. 4.
 - (e) Commissioner Jeanne Herman shall be the commissioner representing county commissioner district No. 5.
7. If a vacancy occurs in the office of any county commissioner before the expiration of the term of that county commissioner, the vacancy shall be filled according to law by appointment of a qualified elector from the county commissioner district which that county commissioner represented in accordance with either subsection 1 or subsection 6 as of the date the appointment is made.
8. A map showing the new county commissioner districts which take effect on January 1, 2022, as set forth in subsections 1 and 6 above, is set forth below. The map is intended to illustrate the new districts. In the event of a conflict between the map and the descriptions of the districts as contained in this ordinance, the descriptions and not the map shall control.



Washoe County Commission Districts, Approved 2021

Proposed on January (month) 11th (day) _____ 2022

Proposed by Commissioner Lucey

Passed February (month) 8th (day) _____ 2022

Vote:

Ayes: Commissioners Hartung, Hill, Lucey, Jung

Nays: Commissioners Herman

Absent: Commissioners none

Attest:

Jan Galarsini
County Clerk

[Signature]
Chair of the Board

This ordinance shall be in force and effect retroactively from and after the 1st day of the month of January of the year 2021.