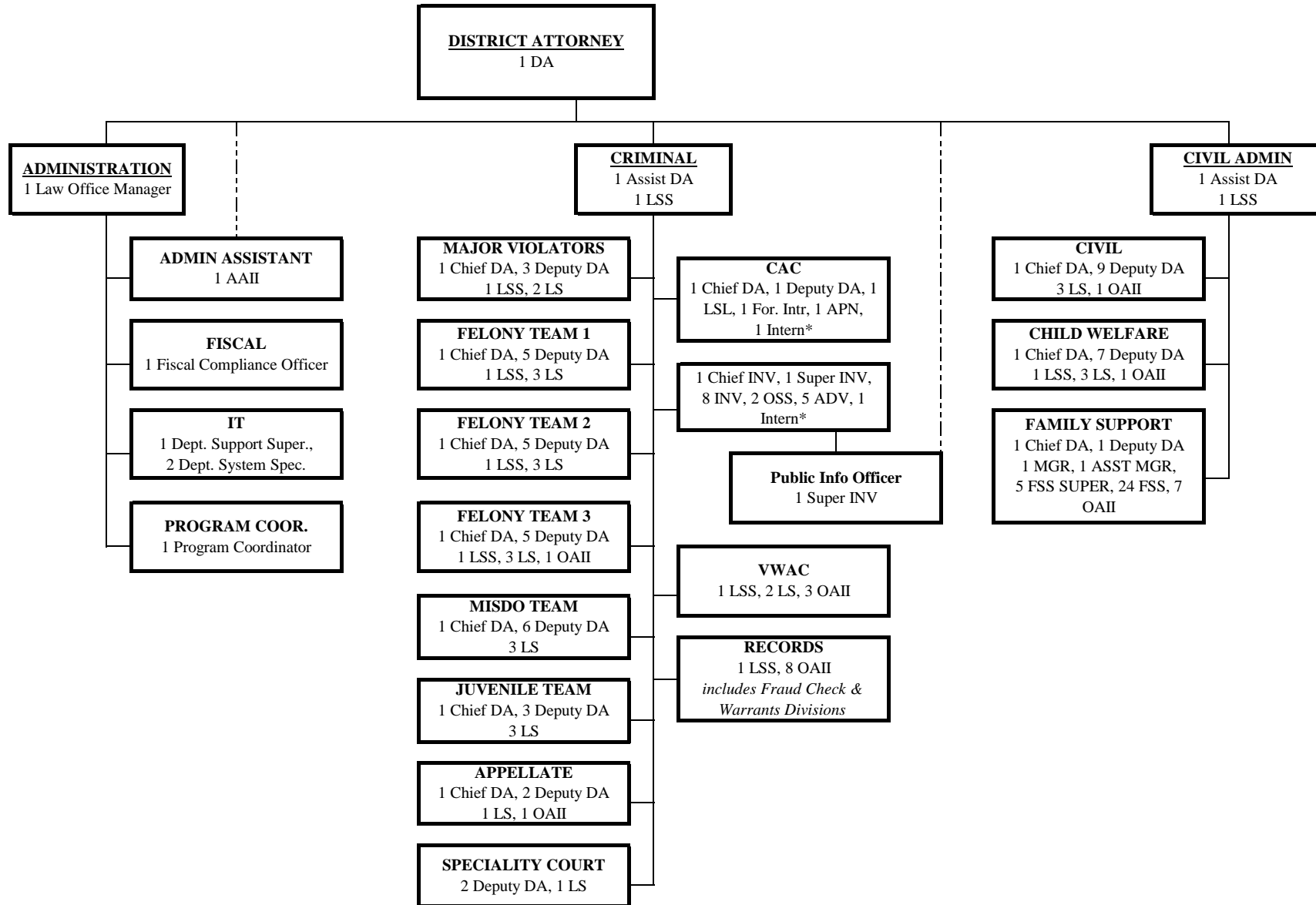


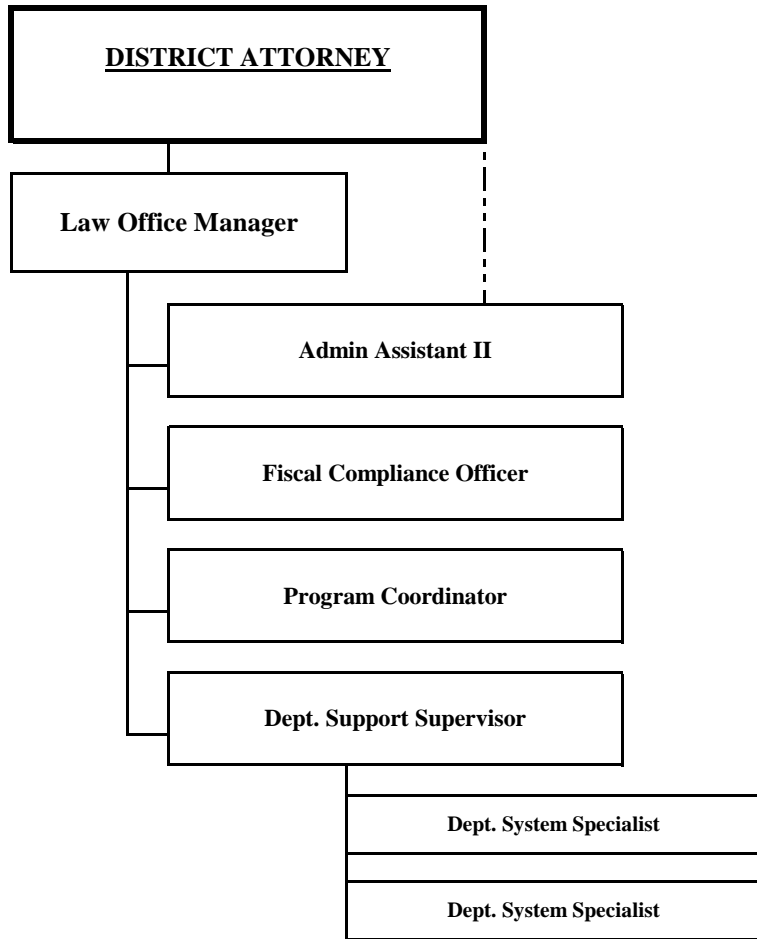
WASHOE COUNTY DISTRICT ATTORNEY'S OFFICE



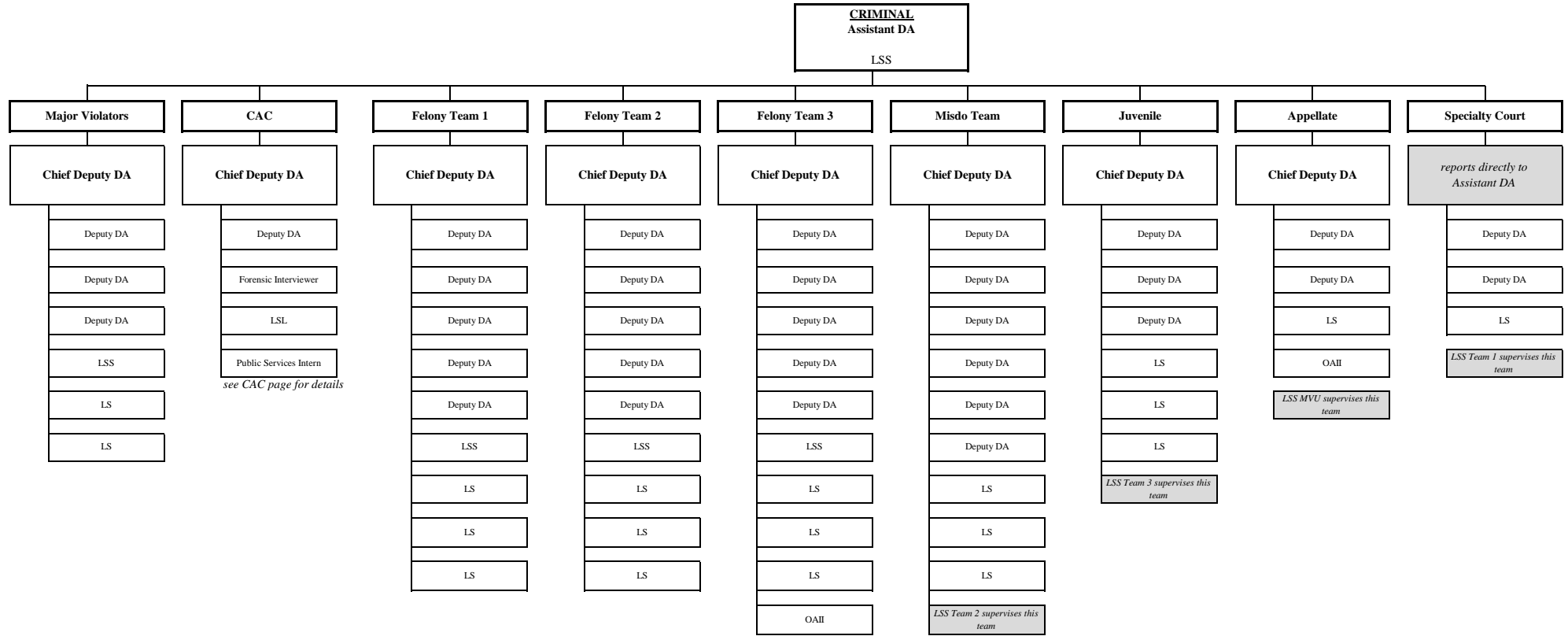
LEGEND: DA=District Attorney LSS=Legal Secretary Supervisor LSL=Legal Secretary Lead LS=Legal Secretary OAI=Office Assistant II INV=Investigator ADV=Advocate  
OSS=Office Support Specialist MGR=Program Manager FSS SUPER=Family Support Specialist Supervisor FSS=Family Support Specialist

\* Intern at CAC & Investigations are part-time paid intern (0 FTE)

WASHOE COUNTY DISTRICT ATTORNEY'S OFFICE

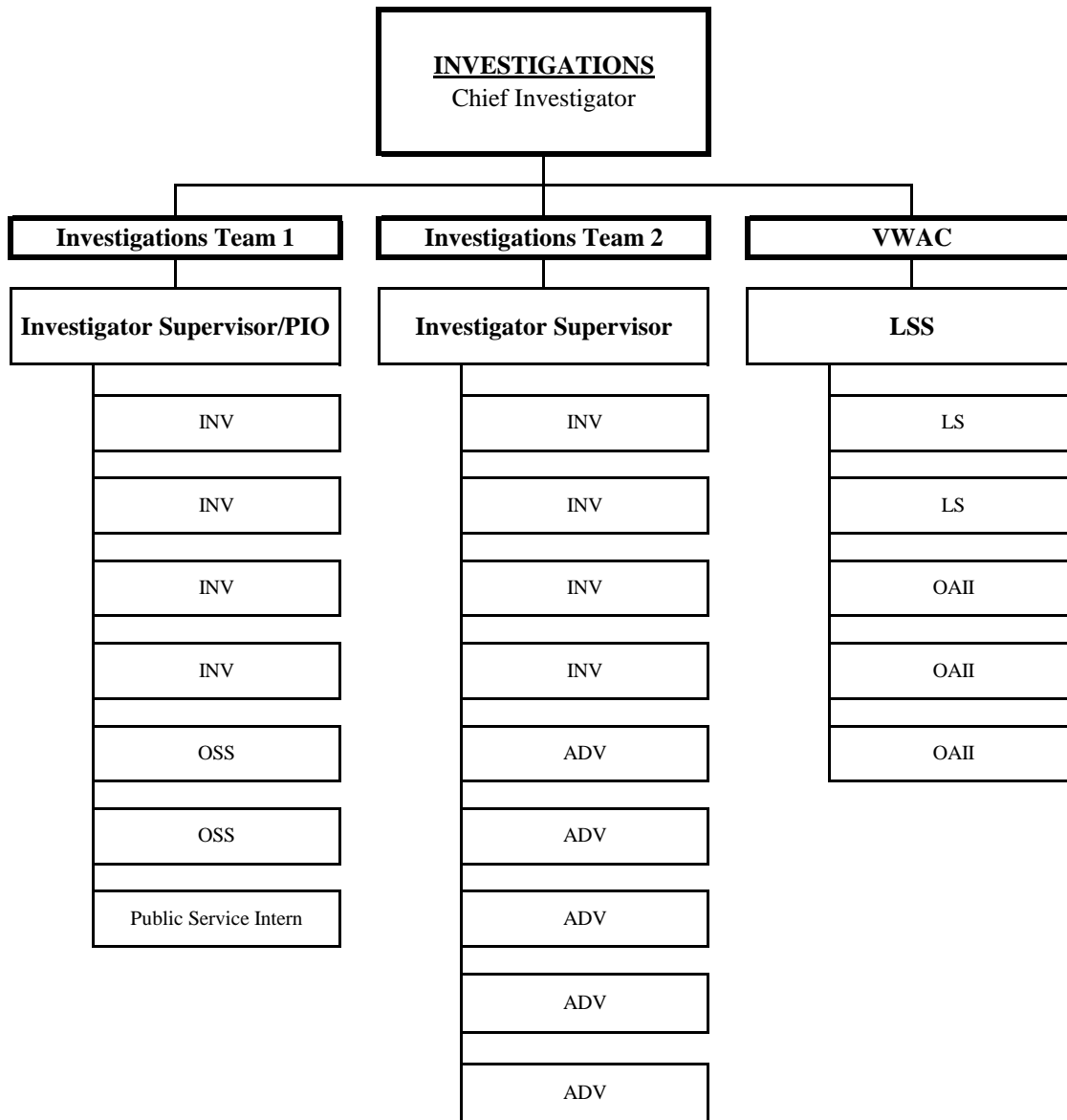


WASHOE COUNTY DISTRICT ATTORNEY'S OFFICE



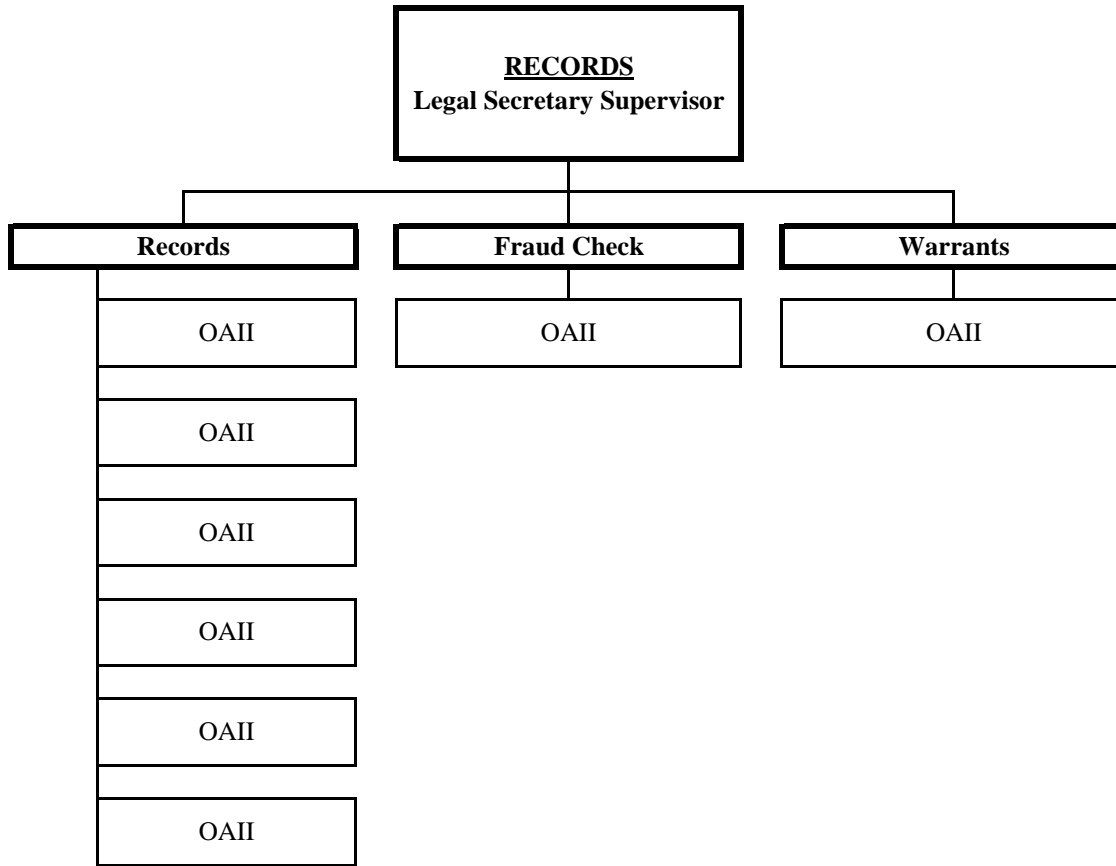
LEGEND: DA=District Attorney LSS=Legal Secretary Supervisor LS=Legal Secretary OAI=Office Assistant II

WASHOE COUNTY DISTRICT ATTORNEY'S OFFICE

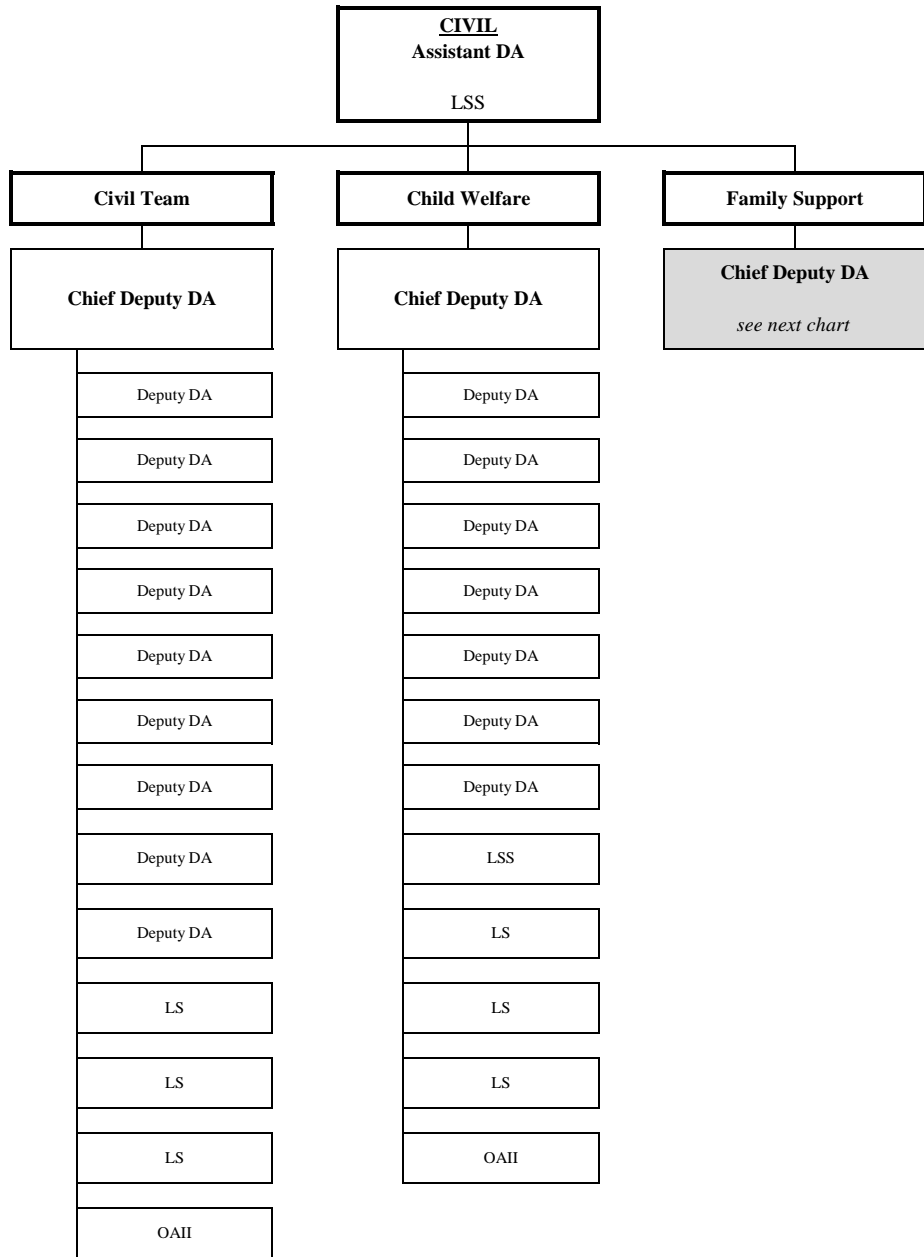


LEGEND: LSS=Legal Secretary Supervisor LS=Legal Secretary OAII=Office Assistant II INV=Investigator  
ADV=Advocate OSS=Office Support Specialist

WASHOE COUNTY DISTRICT ATTORNEY'S OFFICE

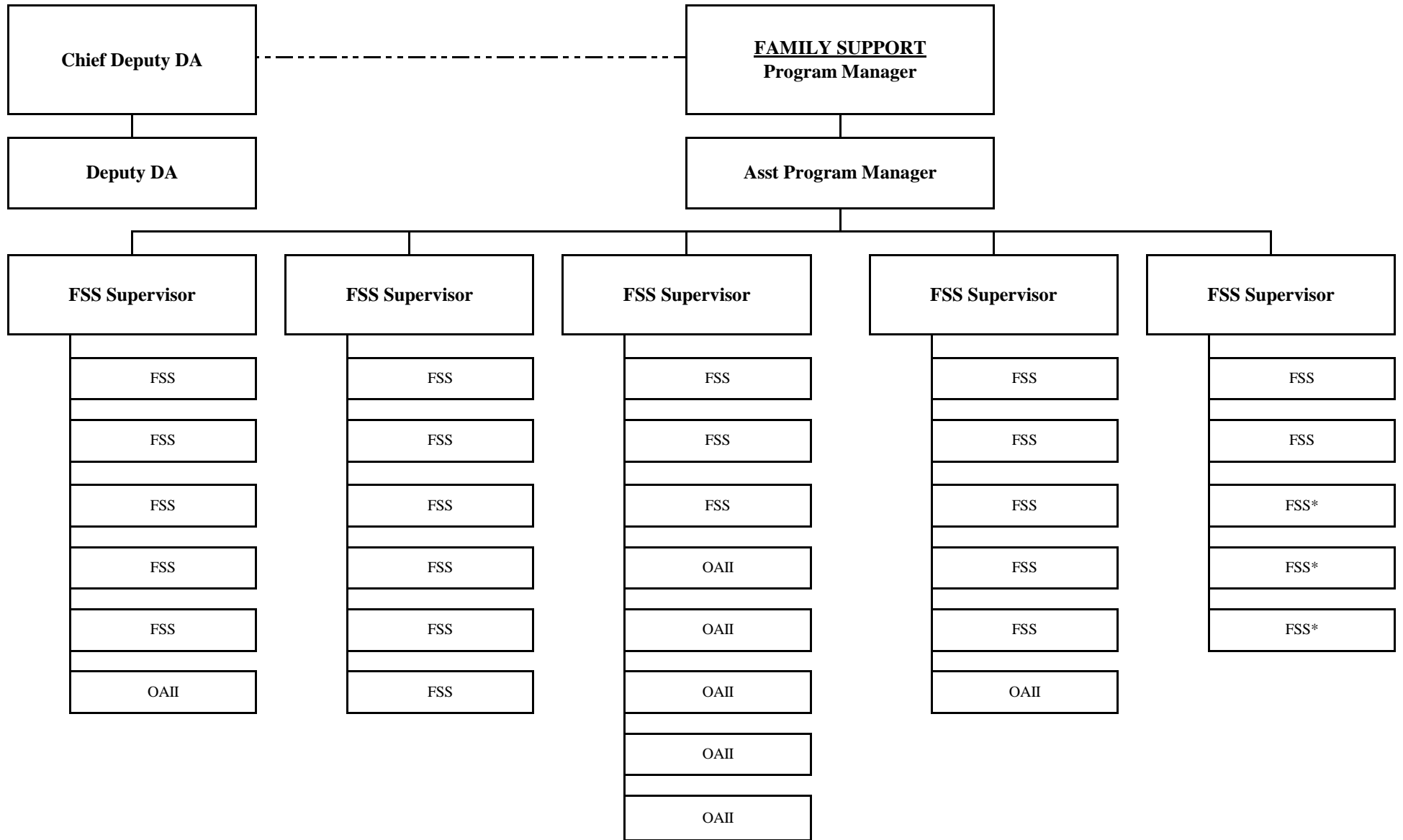


LEGEND: LSS=Legal Secretary Supervisor LS=Legal Secretary OAI=Office Assistant II



LEGEND: DA=District Attorney LSS=Legal Secretary Supervisor LS=Legal Secretary OAI=Office Assistant II

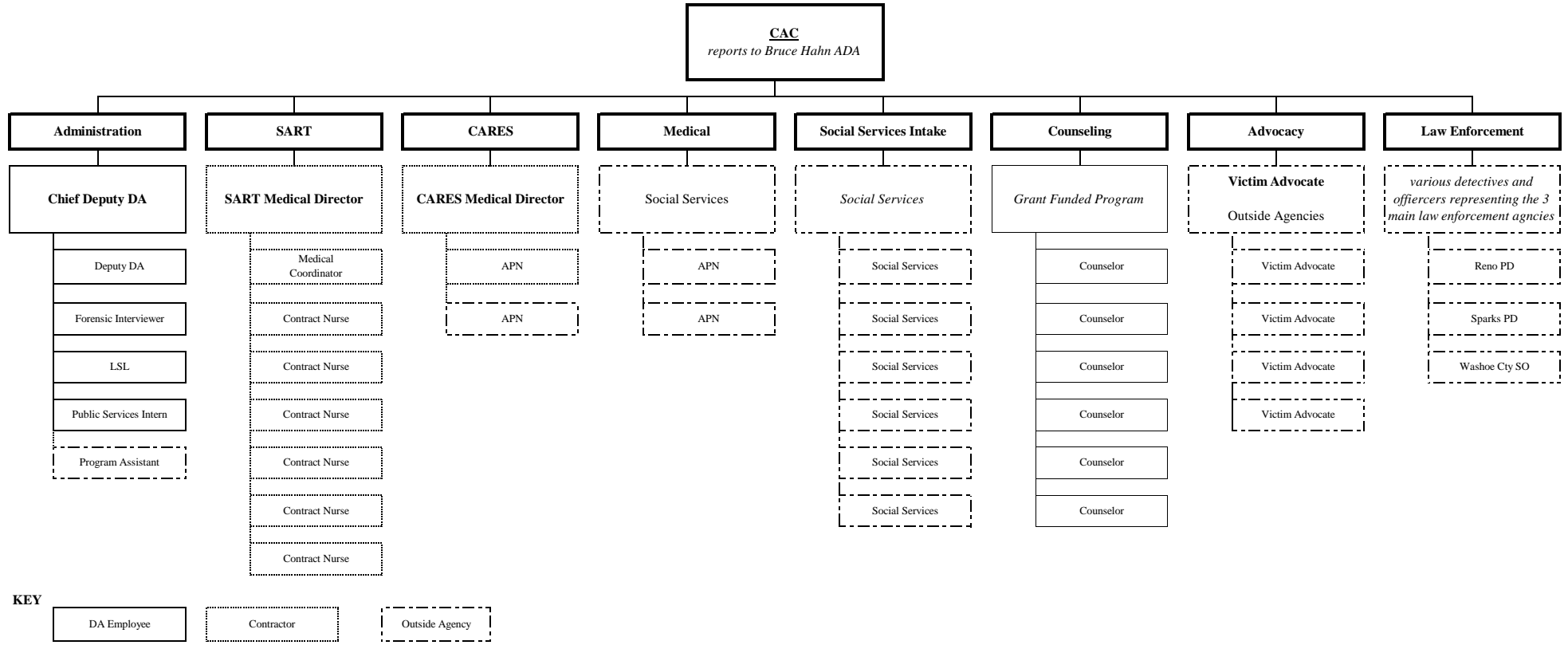
WASHOE COUNTY DISTRICT ATTORNEY'S OFFICE



LEGEND: DA=District Attorney OAI=Office Assistant II FSS SUPER=Family Support Specialist Supervisor FSS=Family Support Specialist

\*Incentive paid special programs team

WASHOE COUNTY DISTRICT ATTORNEY'S OFFICE



\*\*DA Advocate not assigned full time to CAC  
Maisha Smith is under contract as both a SART nurse and a medical assistant to Dr. MacLeod (the later paid by a Social Services VOCA grant)  
Becky Gebhardt is a Social Services Employee who may perform CARES exams in addition to her other medical duties



FY 2017-2018  
As of 7/1/2017

WASHOE COUNTY DISTRICT ATTORNEY'S OFFICE

Total 179 FTE  
+ 1 Public Intern

	DA	LOM	FCO	AAH	PC	IT	ADA	CDDA	DA	FOR	C INV	S INV	INV	VSM	Adv	PM	APM	FSS-S	FSS	LSS	LSL	LS	OSS	OAH		
Admin	1	1	1	1	1	3																			8	
Crim							1	7	31											4		19			2	64
CAC								1	1	1												1				4
Investigation											1	2	8		5					1		2	3		3	25
Records																				1					8	9
Civil							1	2	16											1		7			2	29
Fam Support								1	1																7	40
	1	1	1	1	1	3	2	11	49	1	1	2	8		5	1	1	5	24	7	1	28	3	22	179	179

Plus 2 Public Service Intern (0 FTE)