



Washoe County Health District

Summer 2009 Influenza Surveillance Program Weekly Report

CDC Week #39: September 27 – October 3, 2009

This is the last report for Summer 2009.

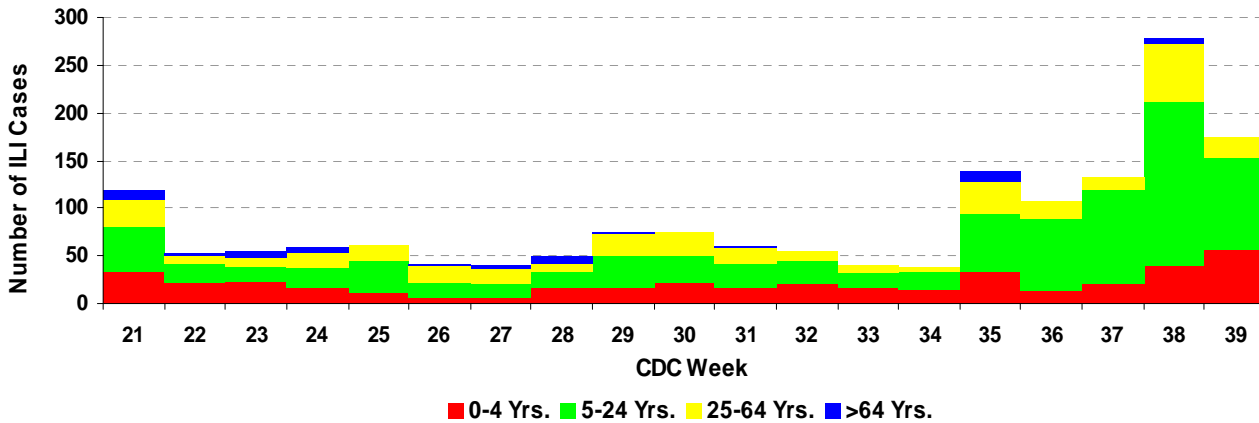
Date: Tuesday, October 6, 2009
To: Participating Health Care Providers

<p>From: Influenza Surveillance Coordinator: Denise Stokich, Epidemiologist Division of Epidemiology & Public Health Preparedness (EHPH) 775-328-6188</p>	<p>Report Preparer: Sharon Clodfelter, Biostatistician Division of Epidemiology & Public Health Preparedness (EHPH) 775-328-2495</p>
---	---

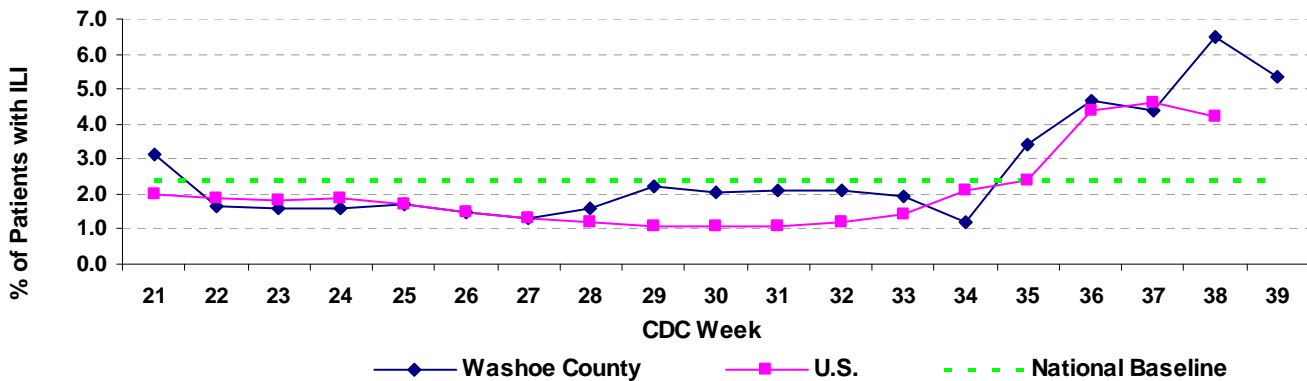
Summary: Five of the six participating providers reported a total of 174 patients with influenza-like-illness (ILI) for week ending October 3, 2009 (week 39). The percentage of persons seen with ILI by the five providers was 5.4% (174/3236). During week 38, the percentage of patient visits to U.S. sentinel providers due to ILI was 4.2%. This percentage is above the national baseline of 2.4%. On a regional level, the percentage of visits for ILI ranged from 1.4 to 7.4%.

Level of Influenza Activity:

Number of ILI Cases by Week and Age Group Reported by Sentinel Providers, Washoe County Influenza Surveillance, Summer 2009.



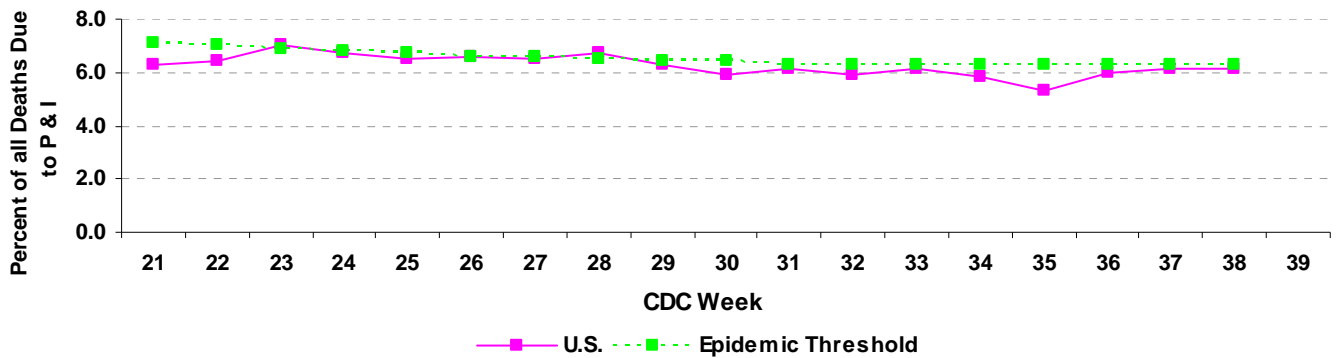
Proportion of Patients Seen with ILI by Sentinel Physicians, Washoe County Influenza Surveillance, Summer 2009.



Data source for U.S. and National Baseline: CDC Influenza Summary Update.

Pneumonia & Influenza Mortality: The local pneumonia (P) and influenza (I) data will continue to be monitored; however, it will no longer be included in this report. The data has become too inconsistent due to staffing issues. The epidemic threshold set by CDC for week 38 was 6.4%. The national P & I for week 37 was 6.1%.

Pneumonia and Influenza Mortality, United States, Summer 2009.



Sentinel Provider Testing Results:

Weekly Testing Results:

Week #	# Specimens Submitted*	Results
39	10	2 negative; 8 pending

* This # may vary from one weekly report to the next as providers do not always include all specimens obtained for that reporting week on their tally sheet.

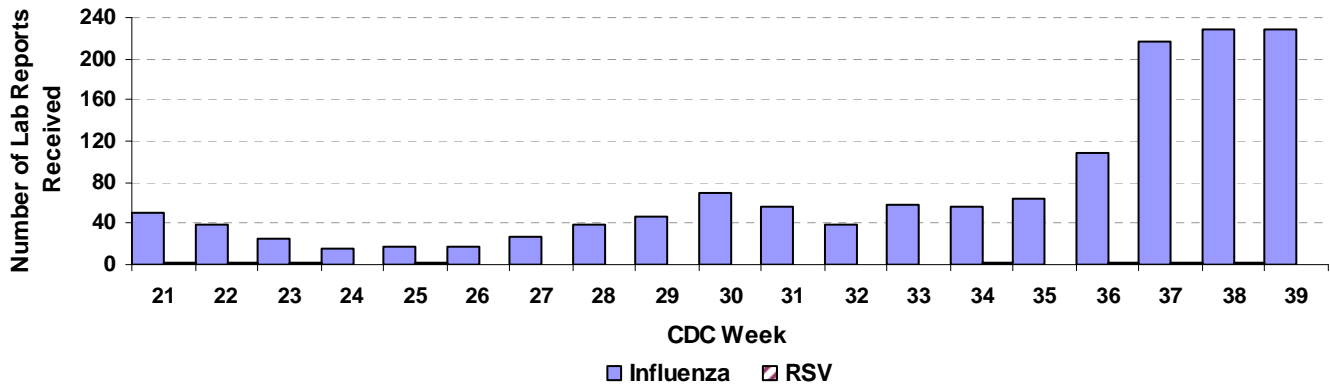
Specimens Submitted To Date:

Total specimens	Influenza type A	Influenza type B	Negative	Pending
233	101	16	94	22

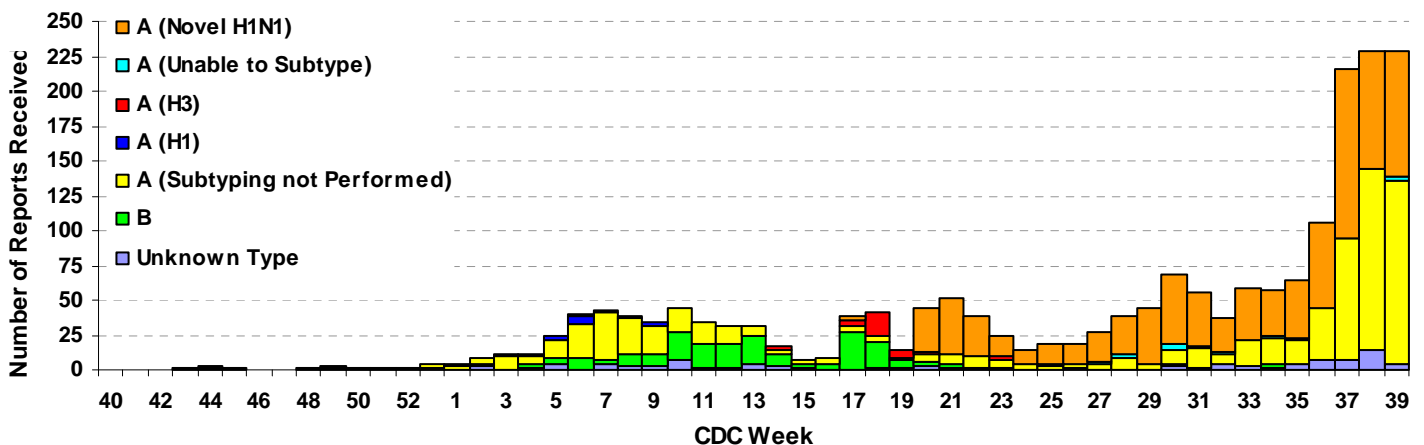
Total Reported for Washoe Co.:

Influenza type A	Influenza type B	Influenza type unknown
1641	198	97
[22 A (H1), 37 A (H3), 833 A (2009 [Novel] H1N1), 22 A (unable to subtype by PCR), 727 A (unk subtype)]		

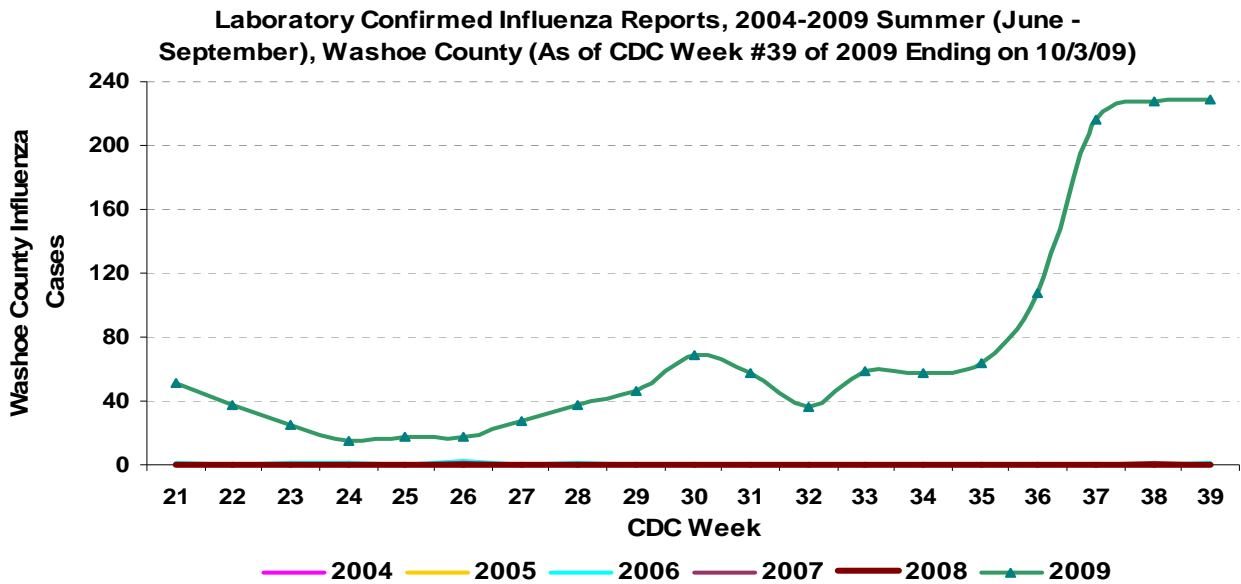
Number of Influenza & RSV Cases, Washoe County Communicable Disease Surveillance, Summer 2009.



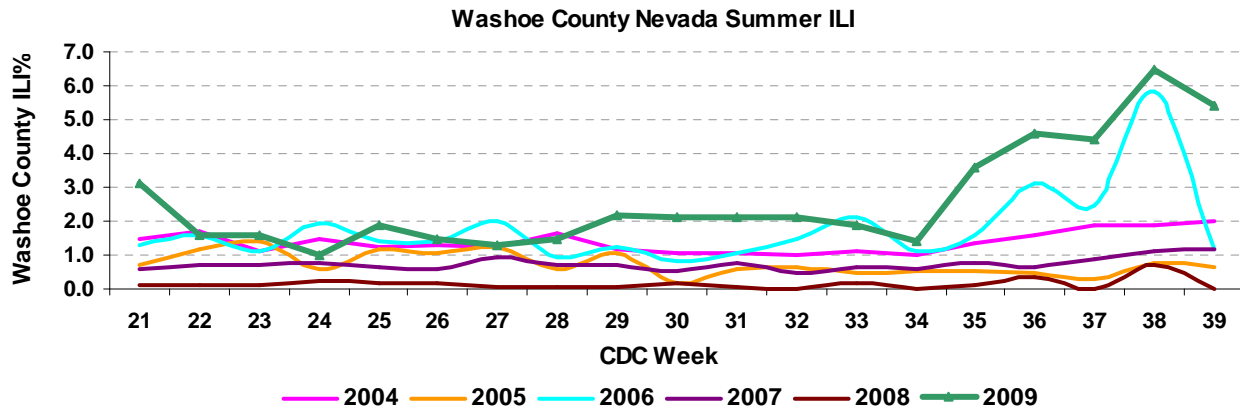
Influenza Positive Tests Reported, Washoe County Influenza Surveillance, 2008-2009.



Laboratory Confirmed Influenza Reports, 2004-2009 Summer Seasons:

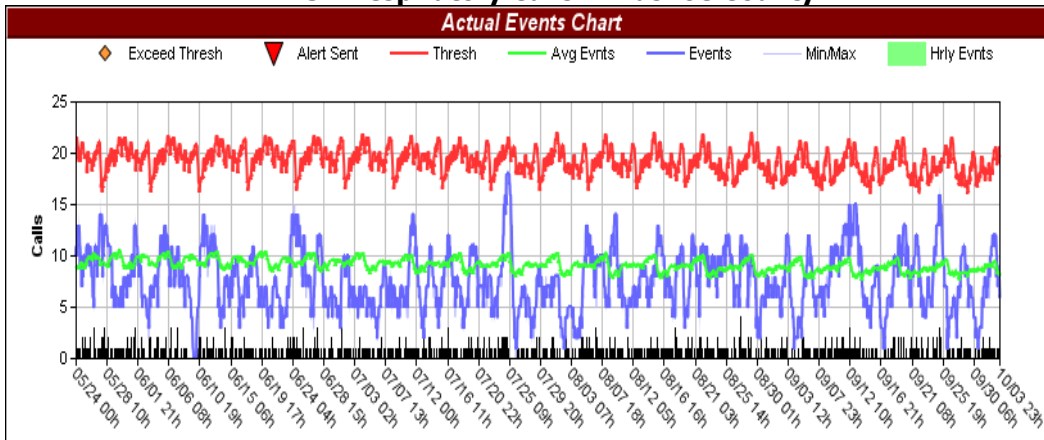


Washoe County ILI Cases Reported by Sentinel Providers, 2004-2009 Summer Seasons:



Syndromic Surveillance:

REMSA Respiratory Calls – Washoe County



REMSA calls which include:

Breathing problem – ineffective breathing, severe respiratory distress, not alert, clammy, abnormal breathing, and/or cardiac history.

(Source: First Watch Surveillance, Data coverage in Washoe : 100%)

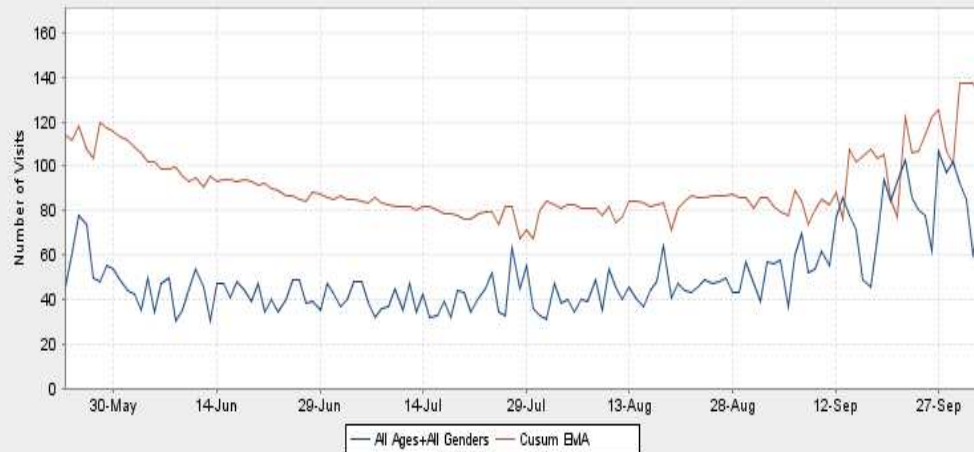
OTC - Washoe, NV
Cough / Cold



Over-the-Counter (OTC) sales for cough and/or cold remedies

include: Cold Relief Adult/Pediatric Liquid/Tablet (plain cold liquids or tablets, antihistamines, decongestants, night-time liquid cold relief products, and allergy relief products); Cough Syrup Adult Liquid/Tablet (Any cough whip products, cough syrups, cough tablets, capsules, squares for relief of cough in adults); Cough Syrup Pediatric Liquid (Any cough whip products, cough syrups for relief of cough in children).

(Data source: National Retail Data Monitor Data coverage in Washoe County: ~40%)

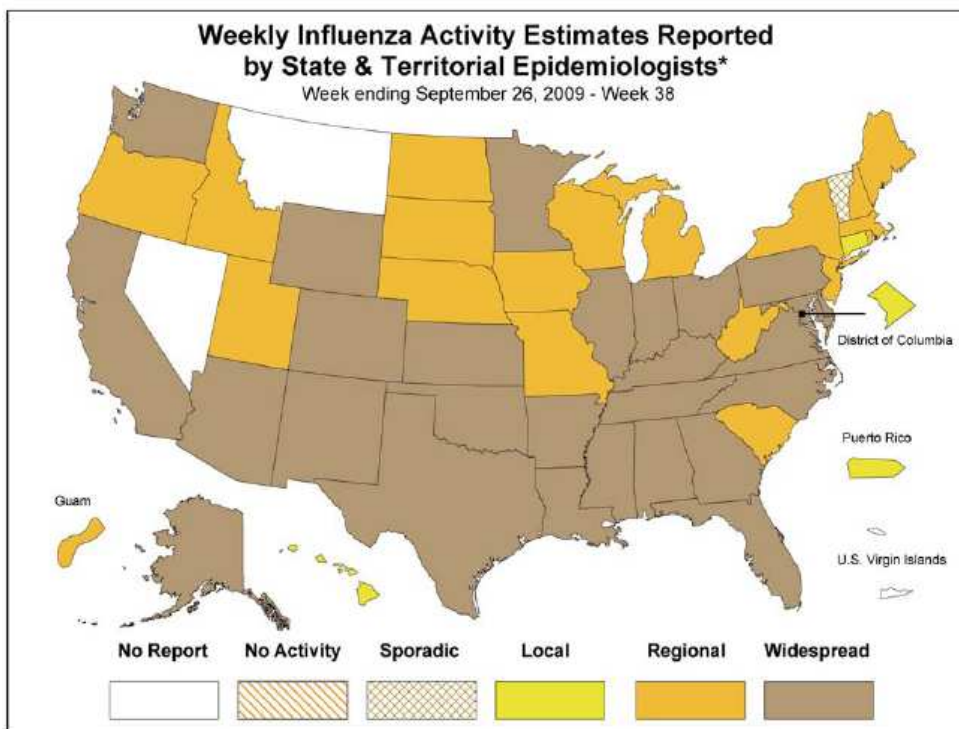


Emergency Room Visits for Respiratory Illness:

Respiratory illnesses are defined as problems of the nose (coryza) and throat (pharyngitis), as well as the lungs. Examples of Respiratory illness include congestion, sore throat, tonsillitis, sinusitis, cold symptoms, bronchitis, cough, shortness of breath, asthma, chronic obstructive pulmonary disease (COPD), and pneumonia. The presence of both cold and flu symptoms is counted in this category, not constitutional.

(Source: EPI Center formerly known as Real-time Outbreak & Disease Surveillance, Data coverage in Washoe: 100%)

Nationally:



For week 38, the following influenza activity was reported:

- Widespread influenza activity was reported by 27 states (Alabama, Alaska, Arizona, Arkansas, California, Colorado, Delaware, Florida, Georgia, Illinois, Indiana, Kansas, Kentucky, Louisiana, Maryland, Minnesota, Mississippi, New Mexico, North Carolina, Ohio, Oklahoma, Pennsylvania, Tennessee, Texas, Virginia, Washington, and Wyoming).
- Regional influenza activity was reported by Guam and 18 states (Idaho, Iowa, Maine, Massachusetts, Michigan, Missouri, Nebraska, New Hampshire, New Jersey, New York, North Dakota, Oregon, Rhode Island, South Carolina, South Dakota, Utah, West Virginia, and Wisconsin).
- Local influenza activity was reported by District Columbia, Puerto Rico, and 2 states (Connecticut and Hawaii).
- Sporadic activity was reported by 1 state (Vermont).
- The U.S Virgin Islands and two states did not report (Montana and Nevada).

To see the complete CDC Influenza Summary Update, please visit <http://www.cdc.gov/flu/weekly/>.